

EST. 1994



**Weaver Barns** *ltd.*  
"everyone needs a little structure in their life"

**BUILD  
YOUR  
DREAM SPACE**



[www.weaverbarns.com](http://www.weaverbarns.com)



# Welcome

Since 1994 Weaver Barns has been building two things—structures and a reputation for unmatched quality. We strive to provide the best in everything we do, from customer service to manufacturing to installation. Quite simply, we provide you an excellent product that you and your family will enjoy for many years to come.







**Manchester** | Sheds & Barns page 16



**Gable** | Sheds & Barns page 18



**Sugarcreek** | Sheds & Barns page 20



**Craftsman** | Sheds & Barns page 22



**Estate** | Sheds & Barns page 24



**Woodshed** | Sheds & Barns page 26



**Highland** | Sheds & Barns page 28



**Grand Junction** | Sheds & Barns page 30



**Studio** | Sheds & Barns page 32



**Timber Ridge** | Backyard Living page 34



**Bradford** | Backyard Living page 36



**Lakewood** | Backyard Living page 38



**Dublin** | Backyard Living page 40



**Camden** | Backyard Living page 42



**Laredo** | Backyard Living page 43



**Gable Garage** | Garages page 46



**Workshop** | Garages page 48



**Classic** | Garages page 50



**Rockport** | Garages page 52



**Willow Creek** | Garages page 54



**Dutch** | Garages page 56



**Heritage** | Garages page 58



**Cumberland** | Cabins page 62



**Frontier** | Cabins page 64



**Aspen** | Cabins page 66



**Rocky Ridge** | Homes page 69



**Cedar Brooke** | Homes page 70



**Cedar Brooke** | Homes page 71



**Timber Lodge** | Homes page 72



**Grand Lake** | Homes page 73





## Structure Matters

Quality is something that we strive for, which is why we use the best materials on the market. From our premium grade flooring to our engineered ventilation system, we take time to ensure that our structures are built the correct way. Not only do we use superior materials, but we also offer a variety of choices, so you don't have to compromise your structure's quality or appearance.



## Designing Your Perfect Space

---

Here at Weaver Barns, we make it our mission to help you find a space that will best fit your needs. Our customizable models set us apart because it allows us to make quality structures that will fit perfectly in any space. Each one of our products goes through a meticulous and thorough design process, where we take the time to integrate our customers' feedback into each of our designs. Once you are interested in our product, one of our team members will sit down with you to discuss which design will work best for your situation. From there, they can help guide you into customizing your dream structure.







## Design Styles

To find a style that best fits your standards, we have a large variety of features for you to choose from. These styles are all unique and customizable, so you can find one that fits best into your space. Unlike other brands, our designs are not only based on appearance, but also on their functionality and durability. If you aren't sure what style will work best for your structure, our team is always eager to help guide you by giving recommendations specific to you and what you're looking for.





## The Importance Of Shelter

---

By definition, a shelter is a place where you can find protection. It should also be reliable and long-lasting, which is what we focus on here at Weaver Barns. When building your structure, we take the time to make sure that every step of the designing and building processes are done with the most precision and accuracy. Not only are our structures built to be reliable, but they are also built to look great and add a unique element to your home.







## What Size Is Right

---

When determining what size is right for your structure, we encourage you to talk to one of our qualified team members to figure out what works best for you. There are a lot of decisions that go into creating a structure, and we want to make that process as easy as possible for you, whether it's a custom home or even a shed.







## Siding Choices

Siding is extremely important when building and customizing your project. It not only adds a personalized element to your structure, but it also provides protection to the outside of your barn protecting it from the elements. With six different siding choices, we give you the flexibility to choose what you want for your structure without overwhelming you with too many options. All of our siding choices have different and unique benefits so you can pick which one is best suited for your needs. Any one of our siding options would be a great choice to add to your structure.





# CUSTOMIZED

you dream it **WE BUILD IT**

It is our pleasure to build the structure you have always wanted. We have built our business on the idea that every structure we build, is built the way the customer wants it. From a basic shed to a fully custom designed structure, to fully customizing any of our models with the options, accessories and layout you want. We will help create your dreamscape. At Weaver Barns, we do it your way.



**BASIC**

OR



**CUSTOMIZED**



schedule  
**A FREE DESIGN  
CONSULTATION**





# QUALITY

## A No Compromise Approach

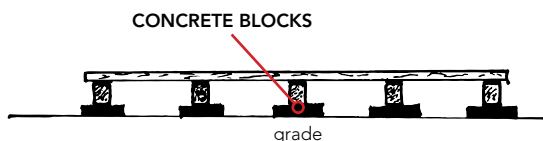
At Weaver Barns, our culture is quality. Every aspect of the projects we do is done right. We care about building something that will last. We understand that our customers need a space that will stand the test of time. From custom milling our floor boards to buying premium grade lumber, to using the finest materials we can source, we do not just build a shed, we build the Weaver way.

## FOUNDATION CHOICES

### BLOCK SITE PREP

*\*Not Recommended For Grades Exceeding 8"*

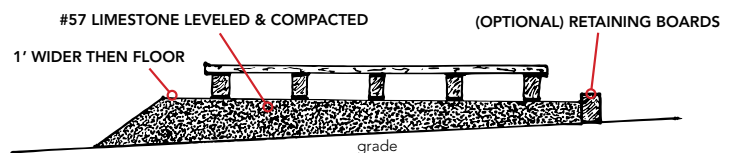
Place 8" x 16" x 4" cement blocks underneath the skids. Every skid needs a block at the front and back and then additional blocks need to be placed in the middle spaced not more than 6' apart.



### LIMESTONE PAD

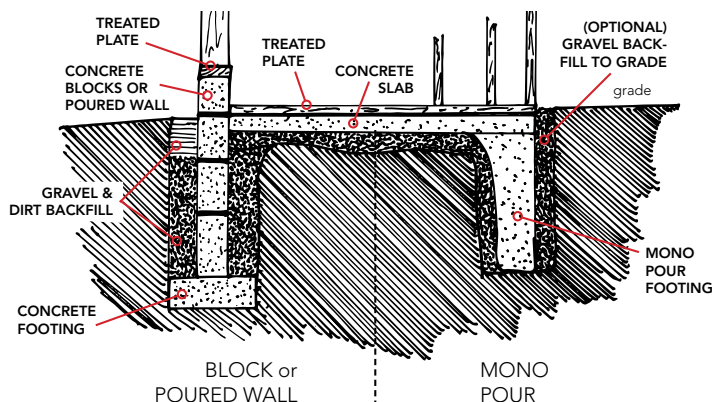
*\*The Most Popular Choice For Sheds*

Spread 4" of #57 limestone in a level pad 12" beyond the width and the length of the building on all sides. Also, you may want to use a 4 x 4 as an edge as shown in the example below.



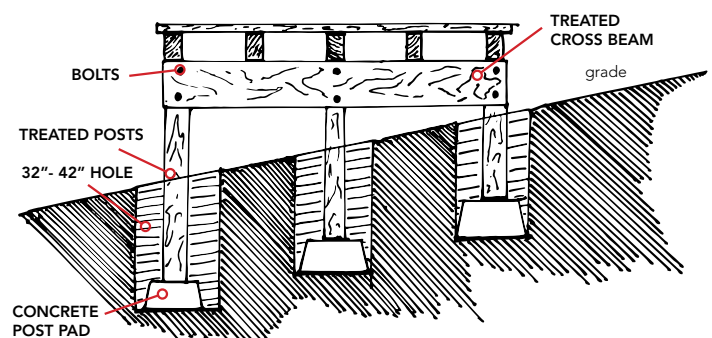
### CONCRETE FOUNDATIONS

Pour the pad 1/2" less than the dimensions of the building. We attached treated plates to the bottom of the walls protecting the walls from moisture and rot. These bottom plates are fastened to the concrete pad with anchors or bolts.



### POST PLATFORM FOUNDATION

Use treated posts. Dig the post holes 32" - 42" deep. Place post pad or concrete in the bottom of the hole. Insert posts. Fasten cross beam joists with bolts to posts as shown making sure that the entire structure is square.







**DELIVERED  
& BUILT ON  
YOUR SITE**

**OUR PRICES INCLUDE DELIVERY**  
WE DELIVER TO YOUR SITE



**PREBUILT  
& DELIVERED**





# SIDING CHOICES

SIGNATURE SIDING CHOICES | Built with our **SUPERIOR 7** features

## SMARTSIDE LAP SIDING

### 50 YEAR LIMITED WARRANTY

- Natural Wood Grain Texture
- 100% Clear
- Pre-Primed
- 50 Year Limited Warranty



## VINYL SIDING

- Maintenance Free
- .044 Thickness
- Match Your Home
- CDX Plywood SubSiding



## PINE SIDING

### WEAVER SIGNATURE CHOICE

- 1 x 8 Premium Grade Pine Siding
- Exclusive Rough Sawn Finish
- Aesthetically Pleasing
- Tongue & Groove



## DURATEMP SIDING

### 50 YEAR LIMITED WARRANTY

- Natural Wood Grain Texture
- 100% Clear
- Pre-Primed
- 50 Year Limited Warranty



## SMARTSIDE SIDING

### 50 YEAR LIMITED WARRANTY

- Natural Wood Grain Texture
- 100% Clear
- Pre-Primed
- 50 Year Limited Warranty



ecoPRO  
OUR BUDGET FRIENDLY CHOICE

ecoPRO  
SERIES

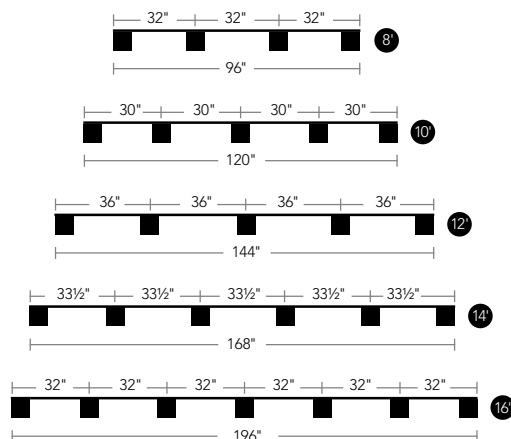
- SMARTSIDE Siding
- Pressure Treated Runners
- Performmax Flooring
- OSB Roofing
- Protective Trim



## Choosing The Right Siding

Choosing which siding is the best option for your barn is extremely important. Although any one of our siding choices would be an excellent choice, they all present different and unique benefits. Whether you are more concerned for your barn's color and aesthetic or for its durability, we have an option for you. If you are still looking for more options, we do offer non-standard alternative options.

### SKID PLACEMENT\*







# SUPERIOR 7

STANDARD ON SIGNATURE SIDING CHOICES

## MORE STORAGE

HIGHER WALLS  
7' 3 1/2" high

## STRONGER ROOF

Superior Plywood Strength  
ROOF SHEATING  
10% STIFFER THAN OSB

## COOLER

Engineered Ventilation System  
EXTENDS SHED LIFE SPAN

## SUPERIOR FRAMING

**BETTER LUMBER**  
Premium Grade

**STRONG DOOR FRAMES**  
2X6 Double Door Headers  
2X4 Double Stud Door Frames

**STRONGER STUDS & RAFTERS**  
16 Inches On Center

## WEATHER PROTECTED

ROT RESISTANT TRIM  
PROTECTS FROM MOISTURE  
DAMAGE

## TOUGHER FLOOR

HEAVIEST FLOOR in the industry  
rated 1,000 lb. per sq. ft.  
PRESSURE TREATED

## STURDY DOORS

SOLID CEDAR  
TRIPLE LAYER DOOR  
With Drop Rods  
For Your Convenience

7 YEAR  
LIMITED  
**WARRANTY**  
SIGNATURE SIDINGS



# ecoPRO

OUR BUDGET FRIENDLY CHOICE



SMARTSIDE SIDING  
MIRATECH TRIM  
OSB ROOF SHEATHING  
PERFORMMAX FLOOR

## MORE STORAGE

HIGHER WALLS  
7'3 1/2" high



## SUPERIOR FRAMING



**BETTER LUMBER**  
Premium Grade



**STRONG DOOR FRAMES**  
2X6 Double Door Headers  
2X4 Double Stud Door Frames

## WEATHER PROTECTED

ROT RESISTANT TRIM  
PROTECTS FROM MOISTURE  
DAMAGE



## STURDY DOORS

TRIPLE LAYER DOOR  
With Drop Rods  
For Your Convenience







#### OPTIONS

ON THIS 10x14

- Teak Dimensional Shingles
- 5' Sidewall Height
- 202TW Doors
- Peak Extension & Bracket
- Bear Beige / Bronze / Pecan

# Manchester

Storage • Horsebarn • Gardening

With a charming gambrel roof, the MANCHESTER is the perfect structure to hold lawn equipment, tools and much more. It provides the efficient storage solution you need with the eye-catching style you want.



## SUPERIOR 7

WE'RE BETTER BY DESIGN

**COOLER**

Engineered Ventilation System  
EXTENDS SHED LIFESPAN

**STRONGER ROOF**

superior plywood strength  
ROOF SHEATING  
10% STIFFER THAN OSB

**WEATHER PROTECTED**

ROT RESISTANT TRIM  
PROTECTS FROM MOISTURE DAMAGE

**SUPERIOR FRAMING**

**BETTER LUMBER**  
Premium Grade

**STRONG DOOR FRAMES**  
2X6 Double Door Headers  
2X4 Double Stud Door Frames

**STRONGER STUDS & RAFTERS**  
16 Inches On Center

**TOUGHER FLOOR**

HEAVIEST FLOOR in the industry  
rated 1,000 lb. per sq. ft. **PRESSURE TREATED**

**MORE STORAGE**

HIGHER WALLS  
7' 3 1/2" high

**STURDY DOORS**

**SOLID CEDAR TRIPLE LAYER DOOR**  
With Drop Rods  
For Your Convenience



## SIDING CHOICES View Pricing Guide For Current Pricing

SIGNATURE SIDING CHOICES WITH SUPERIOR 7 FEATURES					4 SUPERIOR FEATURES
SMARTSIDE LAP SIDING	VINYL SIDING	SOLID PINE SIDING	DURATEMP SIDING	SMARTSIDE SIDING	ecoPRO
					
"an engineered lap siding that looks like wood"	"our best maintenance free choice"	"our highest quality solid wood choice"	"a quality choice made with engineered materials"	"a quality choice made with engineered materials"	"our budget friendly choice"

## BASE PRICE UNIT

HOW IT'S BUILT



**BUILDING HEIGHTS**

8' W = 8' 5"

10' W = 9' 6"

12' W = 10' 1"

14' W = 11' 7"

16' W = 12' 5"

GAMBREL ROOF

DIMENSIONAL YEAR SHINGLES  
AND ALUMINUM DRIP EDGE

GAMBREL OVERHANGS  
11" (8'W - 12'W)  
16" (14'W - 16'W)

EAVE OVERHANGS  
8 1/4" (WOOD SIDINGS)  
9" (VINYL SIDING)

SOLID CEDAR DOORS  
STANDARD SIZES  
8' WIDE 4'  
10' - 12' WIDE 5'  
14' - 16' WIDE 6'

Add Options & Accessories Pg 76





#### OPTIONS

ON THIS 10x16

- Estate Gray Dimensional Shingles
- 2' x 3' Windows
- 202TW Doors
- Dark Gray / White

# Gable

Storage • Workshop • Gardening

It's easy to see why the GABLE is our most popular model. With an appealing design that looks great in any backyard layout, this well-loved shed with its gable style roof is great for storage as well as gardening and workshop needs.



## SUPERIOR 7

WE'RE BETTER BY DESIGN

**COOLER**  
Engineered Ventilation System  
EXTENDS SHED LIFESPAN

**STRONGER ROOF**  
superior plywood strength  
ROOF SHEATING  
10% STIFFER THAN OSB

**WEATHER PROTECTED**  
ROT RESISTANT TRIM  
PROTECTS FROM MOISTURE DAMAGE

**SUPERIOR FRAMING**  
**BETTER LUMBER**  
Premium Grade

**STRONG DOOR FRAMES**  
2X6 Double Door Headers  
2X4 Double Stud Door Frames

**TOUGHER FLOOR**  
HEAVIEST FLOOR in the industry  
rated 1,000 lb. per sq. ft PRESSURE TREATED

**STRONGER STUDS & RAFTERS**  
16 Inches On Center

**MORE STORAGE**  
HIGHER WALLS  
7' 3 1/2" high

**STURDY DOORS**  
SOLID CEDAR  
TRIPLE LAYER DOOR  
With Drop Rods  
For Your Convenience

## SIDING CHOICES View Pricing Guide For Current Pricing

SIGNATURE SIDING CHOICES WITH SUPERIOR 7 FEATURES					4 SUPERIOR FEATURES
SMARTSIDE LAP SIDING	VINYL SIDING	SOLID PINE SIDING	DURATEMP SIDING	SMARTSIDE SIDING	ecoPRO
					
"an engineered lap siding that looks like wood"	"our best maintenance free choice"	"our highest quality solid wood choice"	"a quality choice made with engineered materials"	"a quality choice made with engineered materials"	"our budget friendly choice"

## BASE PRICE UNIT

HOW IT'S BUILT

### BUILDING HEIGHTS

8' W = 9' 9"  
10' W = 10' 2"  
12' W = 10' 7"  
14' W = 11' 2"  
16' W = 11' 7"



Add Options & Accessories Pg 76





#### OPTIONS

ON THIS 10x16

- Driftwood Dimensional Shingles
- 2' x 3' Windows + Transoms
- 102TW Doors
- Traditional Cupola
- Buckskin / Navajo White / Bronze

# Sugarcreek

Storage • Pool House • Gardening

Our hometown original, the quaint SUGARCREEK design is the perfect home for gardening supplies and virtually any hobby or storage need. This model includes both a 32" overhang and eye pleasing curved brackets for exceptional style.



## SUPERIOR 7

WE'RE BETTER BY DESIGN

**COOLER**

Engineered Ventilation System  
EXTENDS SHED LIFESPAN

**STRONGER ROOF**

superior plywood strength  
ROOF SHEATING  
10% STIFFER THAN OSB

**WEATHER PROTECTED**

ROT RESISTANT TRIM  
PROTECTS FROM MOISTURE DAMAGE

**SUPERIOR FRAMING**

**BETTER LUMBER**  
Premium Grade

**STRONG DOOR FRAMES**  
2X6 Double Door Headers  
2X4 Double Stud Door Frames

**STRONGER STUDS & RAFTERS**  
16 Inches On Center

**TOUGHER FLOOR**

HEAVIEST FLOOR in the industry  
rated 1,000 lb. per sq. ft PRESSURE TREATED

**MORE STORAGE**

HIGHER WALLS  
7' 3 1/2" high

**STURDY DOORS**

SOLID CEDAR  
TRIPLE LAYER DOOR  
With Drop Rods  
For Your Convenience



## SIDING CHOICES View Pricing Guide For Current Pricing

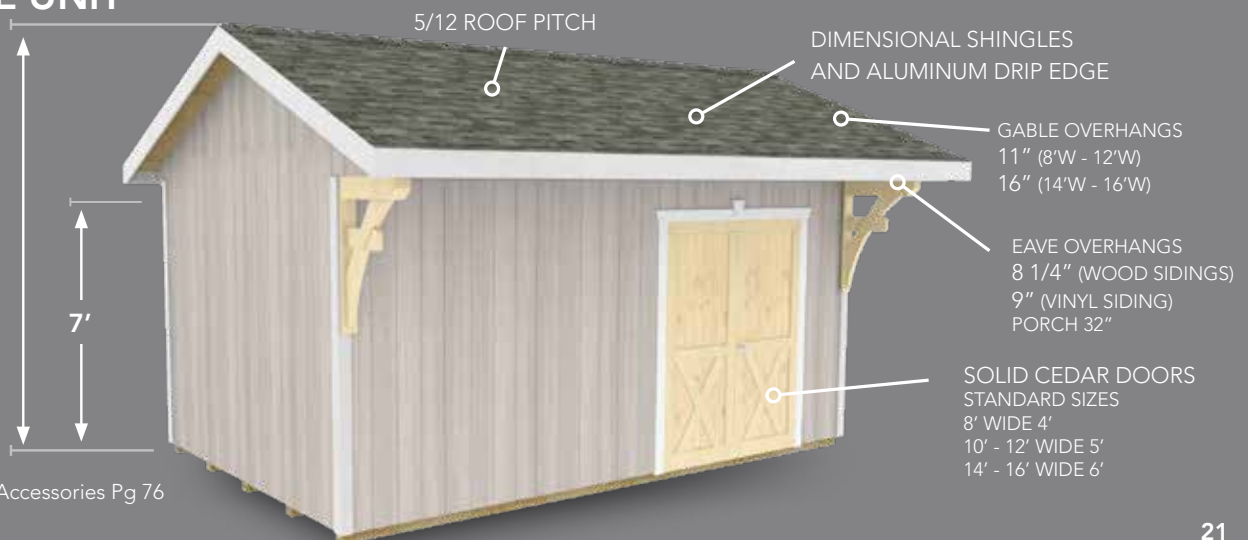
SIGNATURE SIDING CHOICES WITH SUPERIOR 7 FEATURES						4 SUPERIOR FEATURES
SMARTSIDE LAP SIDING	VINYL SIDING	SOLID PINE SIDING	DURATEMP SIDING	SMARTSIDE SIDING		ecoPRO
						
"an engineered lap siding that looks like wood"	"our best maintenance free choice"	"our highest quality solid wood choice"	"a quality choice made with engineered materials"	"a quality choice made with engineered materials"	"our budget friendly choice"	

## BASE PRICE UNIT

HOW IT'S BUILT

### BUILDING HEIGHTS

8' W = 10' 2"  
10' W = 10' 7"  
12' W = 11' 0"  
14' W = 11' 7"  
16' W = 12' 0"



Add Options & Accessories Pg 76





#### OPTIONS

ON THIS 10x14

- Driftwood Dimensional Shingles
- 2' x 3' Windows
- 202TW Doors
- Flower Box / Shutter Set
- Avocado / Almond / Bark

# Craftsman

Workshop • Potting Shed • Pool house

Offering lots of storage room and natural light, the CRAFTSMAN makes a great workshop or gardener's haven. The higher roof pitch and craftsman style brackets add elegance; the additional single door provides convenience. But it's the craftsman style dormer with transom that really raises this model above the ordinary.



COOLER

Engineered Ventilation System  
EXTENDS SHED LIFESPAN



STRONGER ROOF

superior plywood strength  
ROOF SHEATING  
10% STIFFER THAN OSB



WEATHER PROTECTED

ROT RESISTANT TRIM  
PROTECTS FROM MOISTURE DAMAGE



TOUGHER FLOOR

HEAVIEST FLOOR in the industry  
rated 1,000 lb. per sq. ft PRESSURE TREATED



STURDY DOORS

SOLID CEDAR  
TRIPLE LAYER DOOR  
With Drop Rods  
For Your Convenience



MORE STORAGE

HIGHER WALLS  
7' 3 1/2" high



SUPERIOR FRAMING

BETTER LUMBER  
Premium Grade

STRONG DOOR FRAMES  
2X6 Double Door Headers  
2X4 Double Stud Door Frames

STRONGER STUDS & RAFTERS  
16 Inches On Center



SUPERIOR 7

WE'RE BETTER BY DESIGN



SIDING CHOICES

View Pricing Guide For Current Pricing

SIGNATURE SIDING CHOICES WITH SUPERIOR 7 FEATURES						4 SUPERIOR FEATURES
SMARTSIDE LAP SIDING	VINYL SIDING	SOLID PINE SIDING	DURATEMP SIDING	SMARTSIDE SIDING		ecoPRO
						
"an engineered lap siding that looks like wood"	"our best maintenance free choice"	"our highest quality solid wood choice"	"a quality choice made with engineered materials"	"a quality choice made with engineered materials"	"our budget friendly choice"	

BASE PRICE UNIT

HOW IT'S BUILT

- BUILDING HEIGHTS
- 8' W = 10' 6"
- 10' W = 11' 1"
- 12' W = 11' 8"
- 14' W = 12' 5"
- 16' W = 13' 0"



Add Options & Accessories Pg 76





#### OPTIONS

ON THIS 12x16

- Driftwood Dimensional Shingles
- 2' x 3' Windows
- 101SW + VERTICAL TRIM BOARD Doors
- Flower Box / Shutter Set
- Shale / Navajo White / Natural

# Estate

Storage • Workshop • Studio

Our ESTATE model offers classic design with a steeper pitch roof for an elegant presence in your backyard. Standard features include craftsman style brackets, attractive frieze board and an additional single door. Use it for a gardening shed, craft area, or workshop—the possibilities are endless. Make it uniquely yours with color and style options that complement your home.



## SUPERIOR 7

WE'RE BETTER BY DESIGN

**COOLER**

Engineered Ventilation System  
EXTENDS SHED LIFESPAN

**STRONGER ROOF**

superior plywood strength  
ROOF SHEATING  
10% STIFFER THAN OSB

**WEATHER PROTECTED**

ROT RESISTANT TRIM  
PROTECTS FROM MOISTURE DAMAGE

**SUPERIOR FRAMING**

**BETTER LUMBER**  
Premium Grade

**STRONG DOOR FRAMES**  
2X6 Double Door Headers  
2X4 Double Stud Door Frames

**STRONGER STUDS & RAFTERS**  
16 Inches On Center

**TOUGHER FLOOR**

HEAVIEST FLOOR in the industry  
rated 1,000 lb. per sq. ft PRESSURE TREATED

**MORE STORAGE**

HIGHER WALLS  
7' 3 1/2" high

**STURDY DOORS**

SOLID CEDAR  
TRIPLE LAYER DOOR  
With Drop Rods  
For Your Convenience



## SIDING CHOICES View Pricing Guide For Current Pricing

SIGNATURE SIDING CHOICES WITH SUPERIOR 7 FEATURES					4 SUPERIOR FEATURES
SMARTSIDE LAP SIDING	VINYL SIDING	SOLID PINE SIDING	DURATEMP SIDING	SMARTSIDE SIDING	ecoPRO
					
"an engineered lap siding that looks like wood"	"our best maintenance free choice"	"our highest quality solid wood choice"	"a quality choice made with engineered materials"	"a quality choice made with engineered materials"	"our budget friendly choice"

## BASE PRICE UNIT

### HOW IT'S BUILT

### BUILDING HEIGHTS

8' W = 10' 6"  
10' W = 11' 1"  
12' W = 11' 8"  
14' W = 12' 5"  
16' W = 13' 0"

7'

7/12 PITCH ROOF

DIMENSIONAL SHINGLES  
AND ALUMINUM DRIP EDGE

GABLE OVERHANGS  
16"

EAVE OVERHANGS  
8 1/4" (WOOD SIDINGS)  
9" (VINYL SIDING)

SOLID CEDAR DOORS  
STANDARD SIZES  
8' WIDE 4'  
10' - 12' WIDE 5'  
14' - 16' WIDE 6'  
36" SINGLE DOOR

Add Options & Accessories Pg 76





#### OPTIONS

ON THIS 10x16

- Galvalume Metal Roof
- 2' x 3' Windows
- Shutter Set
- 204 SD Front Door
- Ebony / Black / Chestnut Brown
- Cupola

# Woodshed

Workshop • Cabin • Pool House

Built for storing just about anything you can imagine, the WOODSHED design offers plenty of space and easy access, especially with its additional single door. A full-length 4' porch with solid wood posts adds a pleasing touch.



## SUPERIOR 7

WE'RE BETTER BY DESIGN

**COOLER**

Engineered Ventilation System  
EXTENDS SHED LIFESPAN

**STRONGER ROOF**

superior plywood strength  
ROOF SHEATING  
10% STIFFER THAN OSB

**WEATHER PROTECTED**

ROT RESISTANT TRIM  
PROTECTS FROM MOISTURE DAMAGE

**SUPERIOR FRAMING**

**BETTER LUMBER**  
Premium Grade

**STRONG DOOR FRAMES**  
2X6 Double Door Headers  
2X4 Double Stud Door Frames

**STRONGER STUDS & RAFTERS**  
16 Inches On Center

**TOUGHER FLOOR**

HEAVIEST FLOOR in the industry  
rated 1,000 lb. per sq. ft PRESSURE TREATED

**MORE STORAGE**

HIGHER WALLS  
7' 3 1/2" high

**STURDY DOORS**

SOLID CEDAR  
TRIPLE LAYER DOOR  
With Drop Rods  
For Your Convenience



## SIDING CHOICES View Pricing Guide For Current Pricing

SIGNATURE SIDING CHOICES WITH SUPERIOR 7 FEATURES					4 SUPERIOR FEATURES
SMARTSIDE LAP SIDING	VINYL SIDING	SOLID PINE SIDING	DURATEMP SIDING	SMARTSIDE SIDING	ecoPRO
					
"an engineered lap siding that looks like wood"	"our best maintenance free choice"	"our highest quality solid wood choice"	"a quality choice made with engineered materials"	"a quality choice made with engineered materials"	"our budget friendly choice"

## BASE PRICE UNIT

HOW IT'S BUILT

### BUILDING HEIGHTS

8' W = 10' 7"  
10' W = 11' 0"  
12' W = 11' 5"  
14' W = 11' 11"  
16' W = 12' 5"



Add Options & Accessories Pg 76





#### OPTIONS

ON THIS 10x16

- Onyx Black Dimensional Shingles
- 2' x 4' Windows
- 203LW Doors
- Pioneer Brown / Natural

# Highland

Potting Shed • Cabin • Pool house

With its porch and higher roof pitch, the HIGHLAND is a roomy choice for weekend getaways, or a welcome retreat after adventure-filled days. Rustic pine timber frame styling puts this structure in a class by itself. An additional single door provides extra convenience.



## SUPERIOR 7

WE'RE BETTER BY DESIGN

**COOLER**

Engineered Ventilation System  
EXTENDS SHED LIFESPAN

**STRONGER ROOF**

superior plywood strength  
ROOF SHEATING  
10% STIFFER THAN OSB

**WEATHER PROTECTED**

ROT RESISTANT TRIM  
PROTECTS FROM MOISTURE DAMAGE

**SUPERIOR FRAMING**

**BETTER LUMBER**  
Premium Grade

**STRONG DOOR FRAMES**  
2X6 Double Door Headers  
2X4 Double Stud Door Frames

**STRONGER STUDS & RAFTERS**  
16 Inches On Center

**TOUGHER FLOOR**

HEAVIEST FLOOR in the industry  
rated 1,000 lb. per sq. ft PRESSURE TREATED

**MORE STORAGE**

HIGHER WALLS  
7' 3 1/2" high

**STURDY DOORS**

SOLID CEDAR  
TRIPLE LAYER DOOR  
With Drop Rods  
For Your Convenience



## SIDING CHOICES

View Pricing Guide For Current Pricing

SIGNATURE SIDING CHOICES WITH SUPERIOR 7 FEATURES						4 SUPERIOR FEATURES
SMARTSIDE LAP SIDING	VINYL SIDING	SOLID PINE SIDING	DURATEMP SIDING	SMARTSIDE SIDING		ecoPRO
						
"an engineered lap siding that looks like wood"	"our best maintenance free choice"	"our highest quality solid wood choice"	"a quality choice made with engineered materials"	"a quality choice made with engineered materials"	"our budget friendly choice"	

## BASE PRICE UNIT

HOW IT'S BUILT

### BUILDING HEIGHTS

8' W = 10' 6"  
10' W = 11' 2"  
12' W = 12' 0"  
14' W = 11' 11"  
16' W = 13' 7"



Add Options & Accessories Pg 76





#### OPTIONS

ON THIS 10x16

- Estate Gray Dimensional Shingles
- 2' x 3' Windows
- 103AW Cedar Double Door
- Z Strap Shutters
- Chestnut Brown / Jamestown Red / Bronze

\*square trim without keystones

# Grand Junction

Storage • Gardening • Studio

Perfect as a craft or potting shed, the charming GRAND JUNCTION looks quaint tucked into any backyard environment. The larger overhangs are both elegant and useful for protection against summer sun or a spring shower.



COOLER

Engineered Ventilation System  
EXTENDS SHED LIFESPAN



STRONGER ROOF

superior plywood strength  
ROOF SHEATING  
10% STIFFER THAN OSB



WEATHER PROTECTED

ROT RESISTANT TRIM  
PROTECTS FROM MOISTURE DAMAGE



TOUGHER FLOOR

HEAVIEST FLOOR in the industry  
rated 1,000 lb. per sq. ft PRESSURE TREATED



STURDY DOORS

SOLID CEDAR  
TRIPLE LAYER DOOR  
With Drop Rods  
For Your Convenience



MORE STORAGE

HIGHER WALLS  
7' 3 1/2" high



SUPERIOR FRAMING

BETTER LUMBER  
Premium Grade

STRONG DOOR FRAMES  
2X6 Double Door Headers  
2X4 Double Stud Door Frames

STRONGER STUDS & RAFTERS  
16 Inches On Center

SUPERIOR 7

WE'RE BETTER BY DESIGN

SIDING CHOICES

View Pricing Guide For Current Pricing

SIGNATURE SIDING CHOICES WITH SUPERIOR 7 FEATURES						4 SUPERIOR FEATURES
SMARTSIDE LAP SIDING	VINYL SIDING	SOLID PINE SIDING	DURATEMP SIDING	SMARTSIDE SIDING		ecoPRO
						
"an engineered lap siding that looks like wood"	"our best maintenance free choice"	"our highest quality solid wood choice"	"a quality choice made with engineered materials"	"a quality choice made with engineered materials"	"our budget friendly choice"	

BASE PRICE UNIT

HOW IT'S BUILT

BUILDING HEIGHTS

8' W = 11' 2"

10' W = 11' 9"

12' W = 12' 4"

14' W = 13' 1"

16' W = 13' 8"



7/12 ROOF PITCH

DIMENSIONAL SHINGLES AND ALUMINUM DRIP EDGE

GABLE OVERHANGS 3'

EAVE OVERHANGS 24"

SOLID CEDAR DOORS  
STANDARD SIZES  
8' WIDE 4'  
10' - 12' WIDE 5'  
14' - 16' WIDE 6'

Add Options & Accessories Pg 76





#### OPTIONS

ON THIS 10x18

- 2 x 2 Windows
- 2 x 3 Windows
- 202TW Doors
- Chestnut Brown  
Buckskin / Jamestown Red

# Studio

Studio • Poolhouse • Gardening

With clean lines and a modern shed roof, our STUDIO is the perfect space for your lifestyle needs. You can use it as a studio space or a poolhouse and even as a garden shed.



## SUPERIOR 7

WE'RE BETTER BY DESIGN

**COOLER**

Engineered Ventilation System  
EXTENDS SHED LIFESPAN

**STRONGER ROOF**

superior plywood strength  
ROOF SHEATING  
10% STIFFER THAN OSB

**WEATHER PROTECTED**

ROT RESISTANT TRIM  
PROTECTS FROM MOISTURE DAMAGE

**SUPERIOR FRAMING**

**BETTER LUMBER**  
Premium Grade

**STRONG DOOR FRAMES**  
2X6 Double Door Headers  
2X4 Double Stud Door Frames

**STRONGER STUDS & RAFTERS**  
16 Inches On Center

**TOUGHER FLOOR**

HEAVIEST FLOOR in the industry  
rated 1,000 lb. per sq. ft. **PRESSURE TREATED**

**MORE STORAGE**

HIGHER WALLS  
7' 3 1/2" high

**STURDY DOORS**

**SOLID CEDAR TRIPLE LAYER DOOR**  
With Drop Rods  
For Your Convenience

## SIDING CHOICES View Pricing Guide For Current Pricing

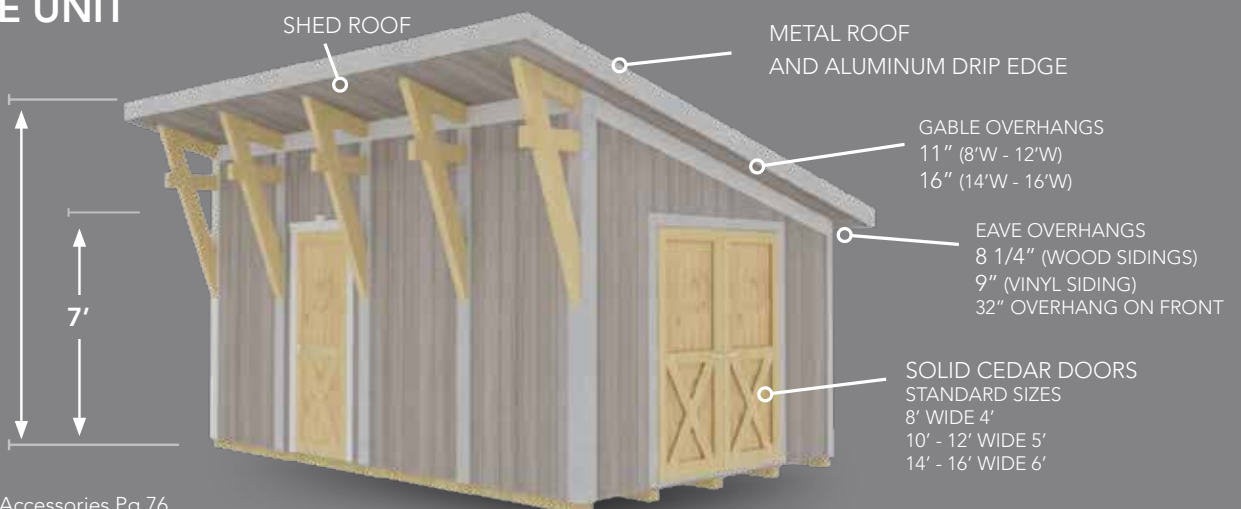
SIGNATURE SIDING CHOICES WITH SUPERIOR 7 FEATURES					4 SUPERIOR FEATURES
SMARTSIDE LAP SIDING	VINYL SIDING	SOLID PINE SIDING	DURATEMP SIDING	SMARTSIDE SIDING	ecoPRO
					
"an engineered lap siding that looks like wood"	"our best maintenance free choice"	"our highest quality solid wood choice"	"a quality choice made with engineered materials"	"a quality choice made with engineered materials"	"our budget friendly choice"

## BASE PRICE UNIT

HOW IT'S BUILT

### BUILDING HEIGHTS

8' W = 10' 1"  
10' W = 10' 7"  
12' W = 11' 1"  
14' W = 11' 7"  
16' W = 12' 0"



Add Options & Accessories Pg 76





#### OPTIONS

ON THIS 12x16

- Driftwood Stain
- Bronze Metal Roof



# Timber Ridge

Available In Solid Pine Or Cedar

Beautiful Timber Framing in a timeless design makes the Timber Ridge Pavilion perfect in any setting. Large rustic solid wood beams and solid wood rafters defines the style and quality of this beautiful structure.

#### BASE PRICE MODEL STANDARD FEATURES

Rough Sawn Solid 8x8 Post's  
Rough Sawn Solid Carrier Beams  
Rough Sawn Solid Timber Frame  
style Gables  
Y-Support Bracing  
8/12 Pitch Roof  
Minimum 4x6 Rafter's 24" O.C.  
1x8 Tongue and Groove ceiling  
CDX Plywood Roof Sheathing  
Aluminum Drip Edge  
Dimensional Shingles



## BRACKET CHOICES



CURVED



STRAIGHT

## SIZES & POST LAYOUTS



### SIZES IN THIS CONFIGURATION

10x10 12x14 16x16  
10x12 12x16  
10x16 14x14  
12x12 14x16



### SIZES IN THIS CONFIGURATION

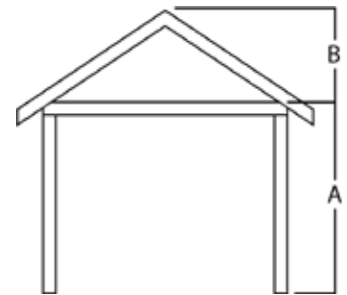
12x20 14x28  
12x24 16x20  
14x20  
14x24



### SIZES IN THIS CONFIGURATION

14x32 20x20  
16x24 20x24  
16x28 20x28  
16x32

## SPECIFICATIONS



width	A	B
10'	8'	12' 9"
12'	8'	13' 8"
14'	8'	14' 6"
16'	8'	15' 4"
20'	8'	16' 2"





#### OPTIONS

ON THIS 12x16

- Pecan
- Driftwood Dimensional Shingles

# Bradford

Available In Solid Pine Or Cedar

With bold rustic rough sawn beams and a classic hip roof, the BRADFORD is timeless in its design. A wonderful addition to a backyard or a pool side, you will love this beautiful structure.

#### BASE PRICE MODEL STANDARD FEATURES

Rough Sawn Solid 8x8 Post's  
Rough Sawn Solid Carrier Beams  
Y-Support Bracing  
7/12 Roof Pitch  
Minimum 4x6 Rafter's 24" O.C.  
1x8 Tongue and Groove ceiling  
CDX Plywood Roof Sheathing  
Aluminum Drip Edge  
Dimensional Shingles



## BRACKET CHOICES



CURVED



STRAIGHT

## SIZES & POST LAYOUTS



### SIZES IN THIS CONFIGURATION

10x10 12x14 16x16  
10x12 12x16  
10x16 14x14  
12x12 14x16



### SIZES IN THIS CONFIGURATION

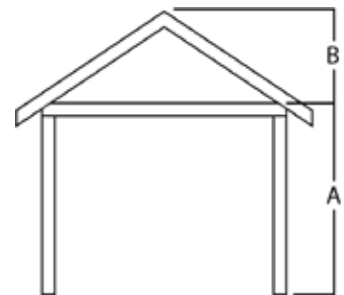
12x20 16x20  
12x24 16x24  
14x20 16x28  
14x24 16x32  
14x28



### SIZES IN THIS CONFIGURATION

14x32 20x32  
20x20  
20x24  
20x28

## SPECIFICATIONS



width	A	B
10'	8'	11' 6"
12'	8'	12' 1"
14'	8'	12' 8"
16'	8'	13' 3"
20'	8'	14' 5"





#### OPTIONS

ON THIS 12x18

- Natural Posts / Chestnut Brown Panels
- Bronze Metal Roof



#### BASE PRICE MODEL STANDARD FEATURES

Rough Sawn Solid 8x8 Post's  
Rough Sawn Solid Carrier Beams  
Y-Support Bracing  
2/12 Roof Pitch  
Minimum 4x6 Rafter's 24" O.C.  
1x8 Tongue and Groove ceiling  
CDX Plywood Roof Sheathing  
Steel Drip Edge  
Metal Roof

# Lakewood

Available In Solid Pine Or Cedar

Mixing classic timber construction with a contemporary one sided roof makes the LAKEWOOD one of a kind. With a standard back and sidewalls creating a barrier from the elements or simply extra privacy for you and your family and friends.



STRUCTURAL OPTIONS

OPEN BACK  
SAME PRICE



CLOSED CEILING  
5% UPCHARGE



BACK & SIDE WALLS  
STANDARD MODEL



SIZES & POST LAYOUTS



SIZES IN THIS  
CONFIGURATION

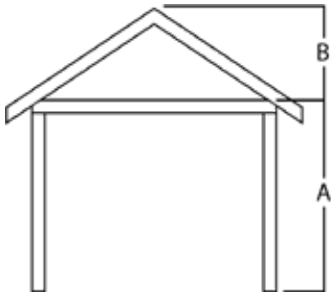
- 12x14
- 12x16
- 12x18
- 14x16
- 14x18



SIZES IN THIS  
CONFIGURATION

- 12x24
- 12x28
- 14x24
- 14x26
- 14x30

SPECIFICATIONS



width	A	B
10'	8'	10' 8"
12'	8'	11' 1"
14'	8'	11' 6"





#### OPTIONS

ON THIS 12x16

- Solid Pine Stained Smoke / Natural
- Bronze Metal Roof



#### BASE PRICE MODEL STANDARD FEATURES (VINYL)

Vinyl Wrapped 8x8 Post's  
Cellular PVC Wrapped Carrier Beams  
Cellular PVC Soffit & Fascia  
7/12 Roof Pitch  
2x6 Rafter's 24" O.C.  
1x8 Tongue and Groove ceiling  
CDX Plywood Roof Sheathing  
Aluminum Drip Edge  
Dimensional Shingles

# Dublin

Available In Pine, Cedar & Vinyl

Everyone loves beautiful outdoor spaces. The Dublin with its clean flush ceiling, exposed post and beam detail and low maintenance construction option, makes it the perfect structure to make a statement in your backyard. Personalize it with beautiful bracket choices.



## BRACKET CHOICES



**STANDARD**  
INCLUDED IN PRICE



**ARCHED**  
\*ADDITIONAL COST  
(VINYL ONLY)



**CURVED**  
\*ADDITIONAL COST  
(VINYL ONLY)



**HARBOR**  
\*ADDITIONAL COST

## SIZES & POST LAYOUTS



**4 POST**

### SIZES IN THIS CONFIGURATION

10x10   12x14   14x16  
10x12   12x16   16x16  
10x16   14x14  
12x12

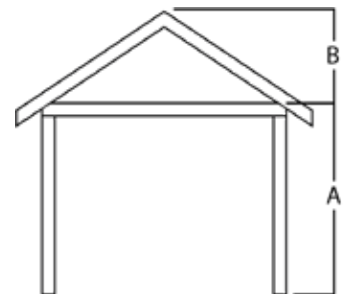


**6 POST**

### SIZES IN THIS CONFIGURATION

12x20   14x32   20x20  
12x24   16x20   20x24  
14x20   16x24   20x28  
14x24   16x28   20x32  
14x28   16x32

## SPECIFICATIONS



width	A	B
10'	9'	12' 4"
12'	9'	12' 11"
14'	9'	13' 6"
16'	9'	14' 1"
20'	9'	15' 3"





#### OPTIONS

ON THIS 12x14

- Clay
- Black Dimensional Shingles

# Camden

With clean lines and classic style, the Camden pavilion makes your backyard living area look great! Built with the idea that simple is better, this pavilion will make your backyard the envy of the neighborhood.

#### HOW ITS MADE

Solid Pine 6x6 Posts  
Miratech Fascia  
Miratech Detail Trim  
Smartside Gable Panels & Ceiling  
Dimensional Shingles  
5/12 Roof Pitch

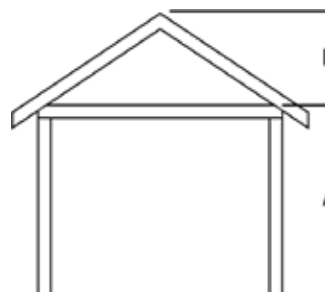
## SIZES & POST LAYOUTS



#### SIZES IN THIS CONFIGURATION

10x10	12x14
10x12	12x16
10x16	14x14
12x12	14x16

## SPECIFICATIONS



width	A	B
10'	8'	10' 2"
12'	8'	10' 7"
14'	8'	11' 0"





**OPTIONS**  
ON THIS 12x12  
• Smoke

# Laredo

Bold big timbers and elegant accents make the LAREDO pergola a perfect addition to your outdoor living space. For extra wow factor add it to a pavilion and create a duel zone outdoor entertainment area.

## HOW ITS MADE

Solid Cedar 8x8 Posts  
Solid Cedar Beams  
Solid Cedar Roof Slats

## SIZES & POST LAYOUTS



### SIZES IN THIS CONFIGURATION

10x10	12x16
10x12	14x14
10x16	14x16
12x12	16x16
12x14	

## SPECIFICATIONS

width	A	B
10'	9'	8' 8"
12'	9'	8' 8"
14'	9'	8' 10"
16'	9'	8' 10"



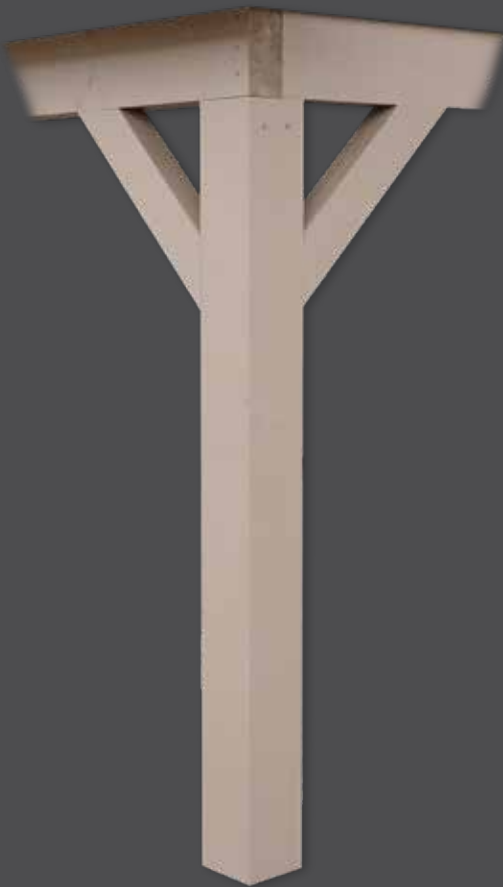
# POST OPTIONS

Add accents to your wood post structures or change post colors on a vinyl structure

## WOOD POST OPTIONS



STANDARD  
WOOD  
POST



OPTIONAL  
SMOOTH  
PINE  
\*LIMITED  
COLORS



OPTIONAL  
CAP & BASE  
WOOD  
ACCENTS

## VINYL POST OPTIONS



STANDARD  
WHITE  
VINYL  
SLEEVE



OPTIONAL  
BLACK  
VINYL  
SLEEVE



OPTIONAL  
CLAY  
VINYL  
SLEEVE

## WOOD BASE ACCENT



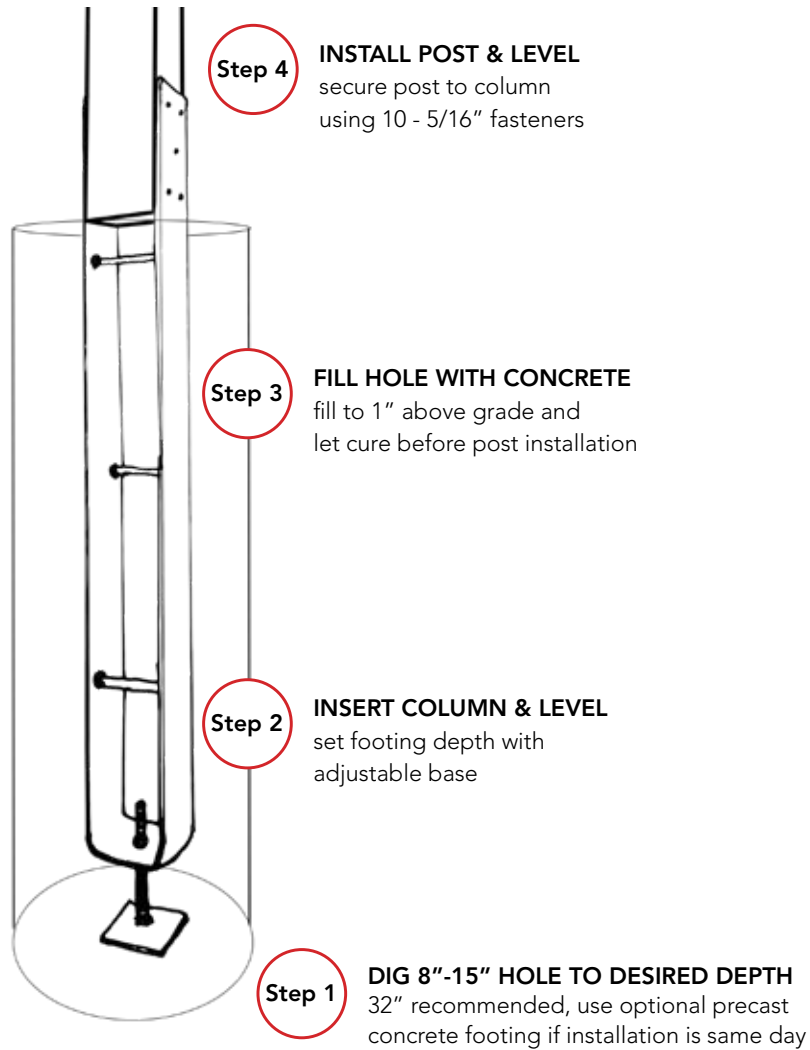
## WOOD CAP ACCENT





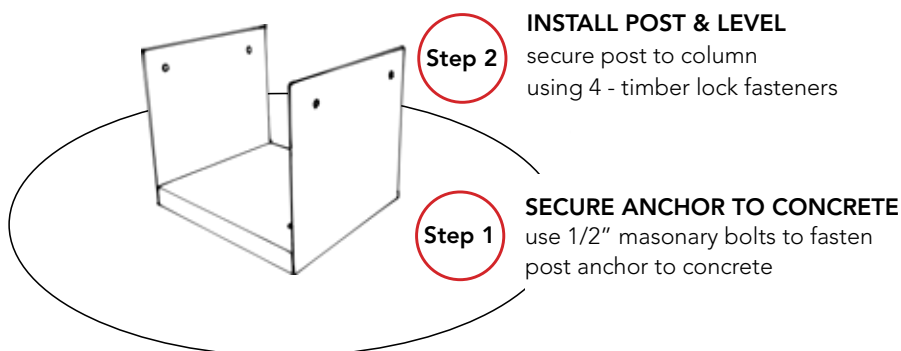
# INSTALLATION METHODS

## DURA COLUMN POST SYSTEM



## METAL POST ANCHOR

Our Included Installation Method







#### OPTIONS

ON THIS 12x20

- 2x4 Windows
- Teak Dimensional Shingles
- Chestnut Brown / Buckskin
- Windows In Garage Door



# Gable Garage

Garage • Storage • Workshop

Our GABLE GARAGE is perfect for equipment storage, tools, tractors or even a car. With a 2x8 floor, this building is considered a portable structure and can be moved. Using our best selling gable design we include everything you need to make this the perfect garage.

#### BASE PRICE MODEL STANDARD FEATURES

**9' x 7' Garage Door** (non-insulated)

**36" 9 - Lite Steel Entry Door**  
With Lock And Key (24 Gauge)

#### 5/12 Roof Pitch

16" O.C Rafters, 30 Year Shingles  
and Aluminum Drip Edge

#### 8' Side Walls

2x4 Studs 16" O.C

**Threshold Diamond Plate**



# Gable Garage standard features | Garages

## SUPERIOR 7

WE'RE BETTER BY DESIGN

**COOLER**

Engineered Ventilation System  
EXTENDS SHED LIFESPAN



**STRONGER ROOF**

superior plywood strength  
ROOF SHEATING  
10% STIFFER THAN OSB



**WEATHER PROTECTED**

ROT RESISTANT TRIM  
PROTECTS FROM MOISTURE DAMAGE



**TOUGHER FLOOR**

HEAVIEST FLOOR in the industry  
rated 1,000 lb. per sq. ft PRESSURE TREATED



**STRONGER STUDS & RAFTERS**

16 Inches On Center



**STRONG DOOR FRAMES**

2X6 Double Door Headers  
2X4 Double Stud Door Frames



**BETTER LUMBER**

Premium Grade



**MORE STORAGE**

HIGHER WALLS  
7' 3 1/2" high



**STURDY DOORS**

SOLID CEDAR  
TRIPLE LAYER DOOR  
With Drop Rods  
For Your Convenience



**SUPERIOR FRAMING**



INFORMATION

*\*free delivery for 30 miles, delivery charges may apply beyond 30*

**BUILDING HEIGHTS**

12' Wide = 11' 7" High  
14' Wide = 12' 0" High  
16' Wide = 12' 5" High



## SIDING CHOICES View Pricing Guide For Current Pricing

**SMARTSIDE LAP SIDING**

50 YEAR LIMITED WARRANTY

- Natural Wood Grain Texture
- 100% Clear
- Pre-Primed
- 50 Year Limited Warranty



**VINYL SIDING**

- Maintenance Free
- .044 Thickness
- Match Your Home
- CDX Plywood Subsidizing



**PINE SIDING**

WEAVER SIGNATURE CHOICE

- 1 x 8 Premium Grade Pine Siding
- Exclusive Rough Sawn Finish
- Aesthetically Pleasing
- Tongue & Groove



**DURATEMP SIDING**

50 YEAR LIMITED WARRANTY

- Natural Wood Grain Texture
- 100% Clear
- Pre-Primed
- 50 Year Limited Warranty



**SMARTSIDE SIDING**

50 YEAR LIMITED WARRANTY

- Natural Wood Grain Texture
- 100% Clear
- Pre-Primed
- 50 Year Limited Warranty





# Workshop

Imagine what you could do with your own workshop! We created the WORKSHOP model with this in mind. It is a garage, but smaller and more suited for the aspiring hobbyist. It is also perfect as a single car garage.



## OPTIONS

ON THIS 18x24

- 12x7 Garage Door
- Carriage House
- 2' x 4' Aluminum Windows
- Driftwood Shingles
- Painted Clay / White
- Natural Cedar Shakes
- Windows In Garage Door

## WORKSHOP ESTIMATE MATRIX



### Basic

Size: 16 x 20

Painted Smartside Siding  
1 - 12 x 7 Insulated Garage Doors  
1 - 6 Panel Steel Door  
30 Year Shingle Roof  
8' Walls

Estimated Price **\$19,900**

+ Foundation & Concrete \$5,200 - \$12,000



### Deluxe

Size: 18 x 24

Painted Smartside Siding  
1 - 12 x 7 Insulated Garage Doors  
1 - 6 Panel Steel Door  
30 Year Shingle Roof  
8' Walls  
Timber Frame Bracket  
2x4 Aluminum Window  
Cedar Shakes

Estimated Price **\$24,300**

+ Foundation & Concrete \$7,000 - \$19,000



### Ultimate

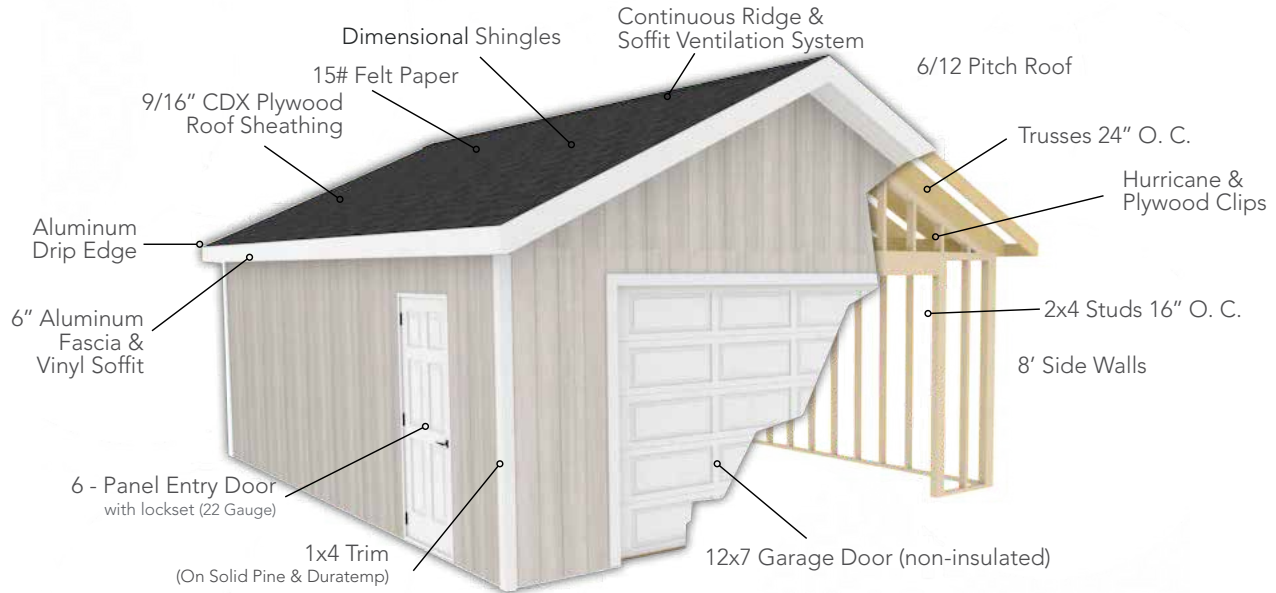
Size: 20 x 32

Painted LP Lap Siding  
1 - 12 x 7 Carriage Garage Doors  
1 - 9 Light Steel Door  
Metal Roof  
Cupola  
Timber Frame Bracket  
2x4 + Transom Aluminum Windows  
Door Awning + Arbor

Estimated Price **\$39,900**

+ Foundation & Concrete \$11,000 - \$15,000

## HOW IT'S MADE



### INFORMATION

\*free delivery for 30 miles, delivery charges may apply beyond 30

The Workshop is real property  
No additional sales tax charged

Floor is not included

#### BUILDING HEIGHTS

16' Wide = 12' 6" High  
18' Wide = 13' 0" High  
20' Wide = 13' 6" High



BASE PRICE MODEL

## SIDING CHOICES View Pricing Guide For Current Pricing

### SMARTSIDE LAP SIDING

50 YEAR LIMITED WARRANTY

- Natural Wood Grain Texture
- 100% Clear
- Pre-Primed
- 50 Year Limited Warranty



### VINYL SIDING

- Maintenance Free
- .044 Thickness
- Match Your Home
- CDX Plywood Subsidizing



### PINE SIDING

WEAVER SIGNATURE CHOICE

- 1 x 8 Premium Grade Pine Siding
- Exclusive Rough Sawn Finish
- Aesthetically Pleasing
- Tongue & Groove



### DURATEMP SIDING

50 YEAR LIMITED WARRANTY

- Natural Wood Grain Texture
- 100% Clear
- Pre-Primed
- 50 Year Limited Warranty



### SMARTSIDE SIDING

50 YEAR LIMITED WARRANTY

- Natural Wood Grain Texture
- 100% Clear
- Pre-Primed
- 50 Year Limited Warranty





# The Classic

From basic to breathtaking, we can build your fully customized dream GARAGE. A full 8' wall height provides plenty of space, for cars, trucks, boats or simply tons of gear. The 1' roof overhang adds a touch of class and the steel entry door increases security for all your treasured possessions.



## OPTIONS ON THIS 24x32

- Custom Cupola
- 16x7 Garage Door Carriage House
- 3' x 4' Vinyl Windows
- Vinyl Shutters
- Estate Gray Dimensional Year Shingles
- Gutters and Downspouts
- Pewter / White
- Windows In Garage Door

## CLASSIC ESTIMATE MATRIX



### Two Car Basic

Size: 24 x 24  
Painted Smartside Siding  
2 - 9 x 7 Uninsulated Garage Doors  
1 - 9 Light Steel Door  
30 Year Shingle Roof  
8' Walls

Estimated Price **\$26,500**  
+ Foundation & Concrete \$9,000 - \$13,000



### Two Car Deluxe

Size: 24 x 24  
Vinyl Siding  
2 - 9 x 7 Insulated Carriage Doors  
2 - 3 x 4 Vinyl Window  
1 - 9 Light Steel Door  
30 Year Shingle Roof  
8' Walls  
7/12 Pitch Roof Upgrade

Estimated Price **\$34,400**  
+ Foundation & Concrete \$9,000 - \$13,000

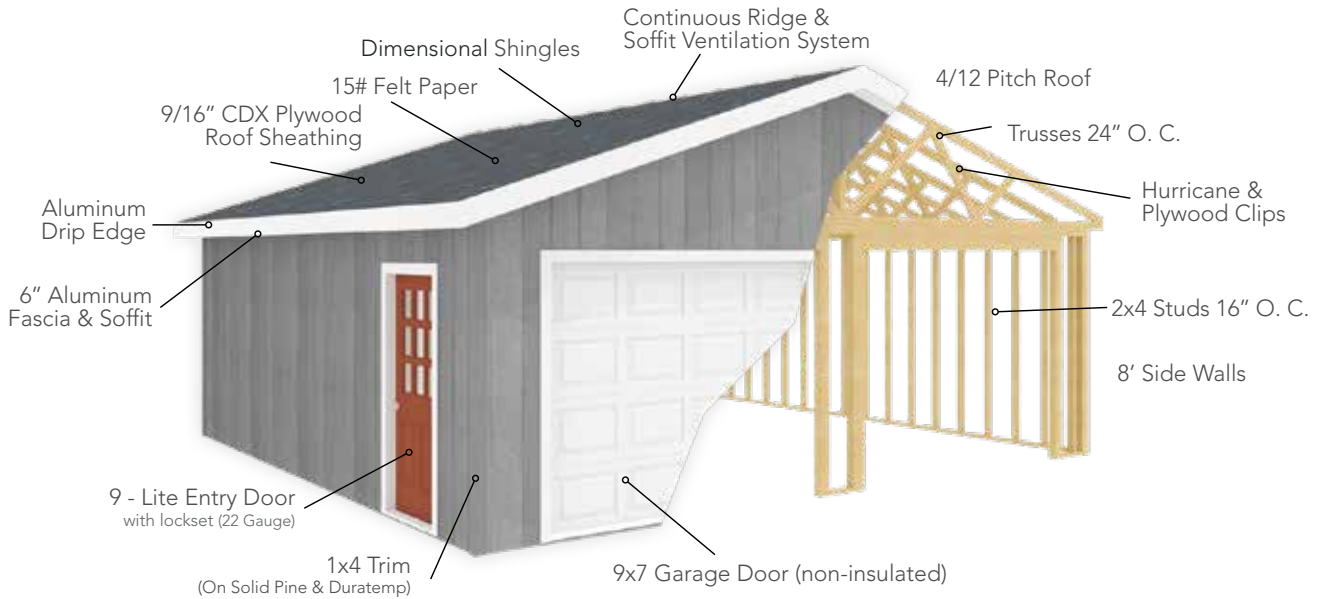


### Three Car Deluxe

Size: 24 x 36  
Vinyl Siding  
3- 9 x 7 Insulated Carriage Doors  
4 - 3 x 4 Vinyl Window  
1 - 9 Light Steel Door  
30 Year Shingle Roof  
9' Walls  
8/12 Pitch Roof Upgrade

Estimated Price **\$49,900**  
+ Foundation & Concrete \$11,000 - \$16,000

## HOW IT'S MADE



### INFORMATION

\*free delivery for 30 miles, delivery charges may apply beyond 30

The Classic is real property  
No additional sales tax charged

Floor is not included

#### BUILDING HEIGHTS

24' Wide = 12' 5" High  
30' Wide = 13' 5" High



BASE PRICE MODEL

## SIDING CHOICES View Pricing Guide For Current Pricing

### SMARTSIDE LAP SIDING

**50 YEAR LIMITED WARRANTY**

- Natural Wood Grain Texture
- 100% Clear
- Pre-Primed
- 50 Year Limited Warranty



### VINYL SIDING

- Maintenance Free
- .044 Thickness
- Match Your Home
- CDX Plywood Subsidizing



### PINE SIDING

**WEAVER SIGNATURE CHOICE**

- 1 x 8 Premium Grade Pine Siding
- Exclusive Rough Sawn Finish
- Aesthetically Pleasing
- Tongue & Groove



### DURATEMP SIDING

**50 YEAR LIMITED WARRANTY**

- Natural Wood Grain Texture
- 100% Clear
- Pre-Primed
- 50 Year Limited Warranty



### SMARTSIDE SIDING

**50 YEAR LIMITED WARRANTY**

- Natural Wood Grain Texture
- 100% Clear
- Pre-Primed
- 50 Year Limited Warranty





# Rockport

With a refined look, the ROCKPORT enhances your property with style. The steeper roof pitch attic truss and included loft gives additional space to the upstairs. This added space can be used for storage, studio or spare room.

## OPTIONS ON THIS 32x24

- Onyx Black Dimensional Shingles
- 2' x 3' Vinyl Windows
- 3' x 4' Vinyl Windows
- 16' x 7' Carriage House Overhead Door
- Cupola
- Board & Batten Vinyl Siding
- Stone Work
- Windows In Garage Door

## ROCKPORT ESTIMATE MATRIX



### Two Car Basic

Size: 24 x 20  
Painted Smartside Siding  
1 - 16 x 7 Insulated Garage Doors  
1 - 9 Light Steel Door  
Loft with Attic Ladder  
30 Year Shingle Roof  
8' Walls

Estimated Price **\$34,500**  
+ Foundation & Concrete \$8,000 - \$12,000



### Two Car Deluxe

Size: 32 x 24  
Vinyl Siding  
1 - 16 x 7 Insulated Carriage Doors  
4 - 2 x 3 Vinyl Window  
1 - 9 Light Steel Door  
30 Year Shingle Roof  
Loft with Attic Ladder  
8' Walls  
42" Stone Wainscot (2 Sides)

Estimated Price **\$54,100**  
+ Foundation & Concrete \$11,000 - \$15,000

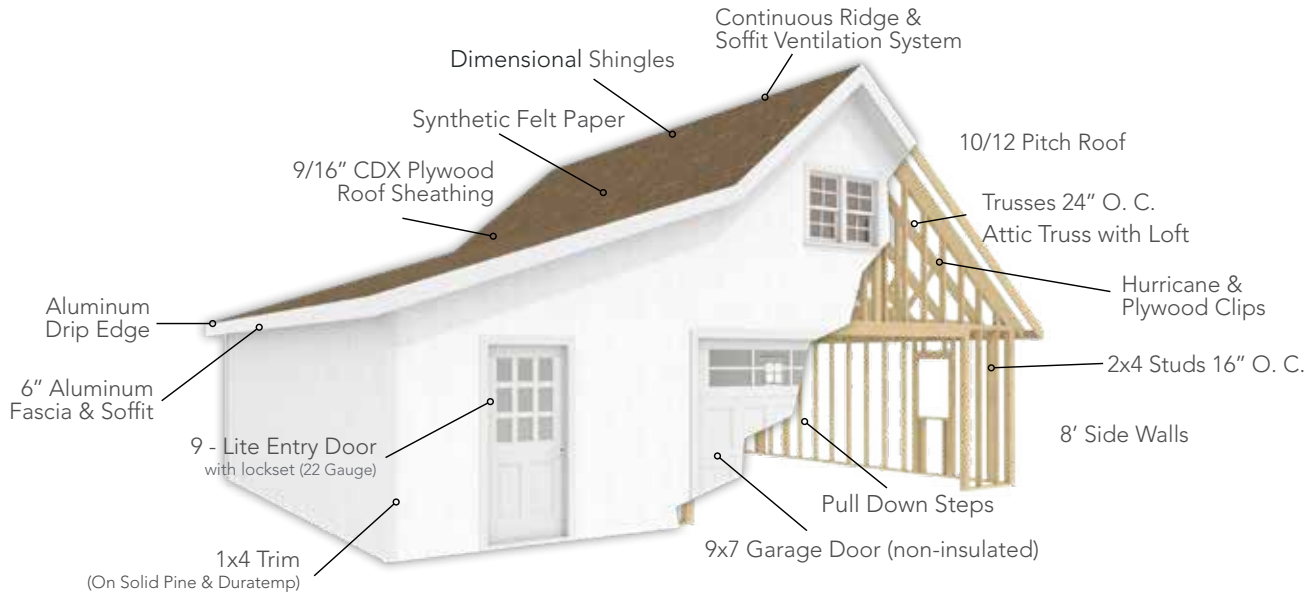


### Three Car Deluxe

Size: 40 x 30  
Vinyl Siding + Special Trims  
1 - 10 x 10 + 1 - 9 x 8 Insulated Carriage Doors  
3 - 3 x 4 + 2 - 2 x 4 Vinyl Window  
1 - 9 Light Steel Door  
40 Year Metal Roof + Cupola  
11' Walls  
Attic Truss With Loft & Ladder  
42" Stone Wainscot (2 Sides)

Estimated Price **\$91,700**  
+ Foundation & Concrete \$14,000 - \$20,000

## HOW IT'S MADE



### INFORMATION

\*free delivery for 30 miles, delivery charges may apply beyond 30

The Rockport is real property  
No additional sales tax charged

Floor is not included

#### BUILDING HEIGHTS

20' Wide = 17' 1" High  
24' Wide = 18' 9" High  
30' Wide = 21' 3" High



BASE PRICE MODEL

## SIDING CHOICES View Pricing Guide For Current Pricing

### SMARTSIDE LAP SIDING

- 50 YEAR LIMITED WARRANTY**
- Natural Wood Grain Texture
  - 100% Clear
  - Pre-Primed
  - 50 Year Limited Warranty



### VINYL SIDING

- Maintenance Free
- .044 Thickness
- Match Your Home
- CDX Plywood Subsidizing



### PINE SIDING

#### WEAVER SIGNATURE CHOICE

- 1 x 8 Premium Grade Pine Siding
- Exclusive Rough Sawn Finish
- Aesthetically Pleasing
- Tongue & Groove



### DURATEMP SIDING

- 50 YEAR LIMITED WARRANTY**
- Natural Wood Grain Texture
  - 100% Clear
  - Pre-Primed
  - 50 Year Limited Warranty



### SMARTSIDE SIDING

- 50 YEAR LIMITED WARRANTY**
- Natural Wood Grain Texture
  - 100% Clear
  - Pre-Primed
  - 50 Year Limited Warranty





# Willow Creek

The striking design of the WILLOW CREEK with its higher pitch roof makes a powerful statement. Add even more elegance with optional lean-tos and overhangs. Inside, there's loads of room to use for storage or living space. This is a real dream structure you can enjoy year round.

## OPTIONS

ON THIS 24x36

- Bronze Metal Roof
- Custom Cupola
- 9 x 7 Carriage House Door w/ Openers
- Pecan Stain
- Painted Steel Entry Door
- Deadbolt
- 2' x 3' Windows
- 2' x 4' Windows
- Door Awning
- Windows In Garage Door
- 8' Leanto

## WILLOW CREEK ESTIMATE MATRIX



### Two Car Basic

Size: 20 x 24  
 Painted Smartside Siding  
 1 - 16 x 7 Insulated Garage Doors  
 1 - 9 Light Steel Door  
 30 Year Shingle Roof  
 10' Walls  
 Half Loft & Steps with Landing

Estimated Price **\$43,000**  
 + Foundation & Concrete \$8,000 - \$12,000



### Two Car Deluxe

Size: 24 x 32  
 Painted Smartside Siding  
 2 - 9 x 7 Insulated Carriage Doors  
 4 - 2 x 4 + 3 - 2 x 3 Aluminum Windows  
 1 - 9 Light Steel Door  
 30 Year Shingle Roof  
 10' Walls  
 Half Loft & Steps with Landing  
 Awning

Estimated Price **\$61,100**  
 + Foundation & Concrete \$11,000 - \$15,000

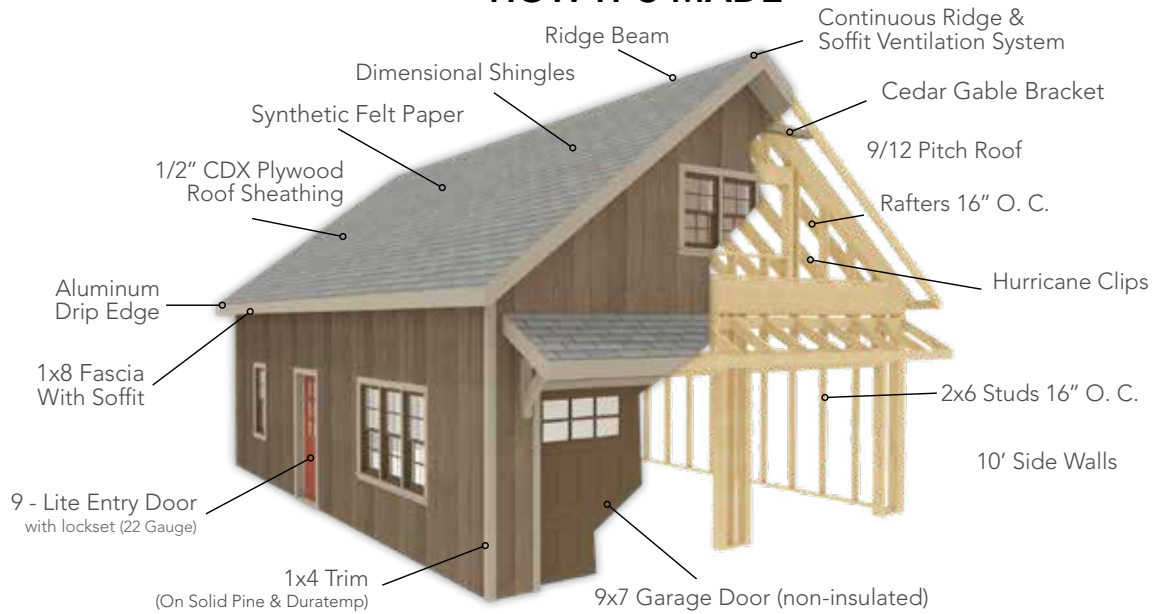


### Three Car Deluxe

Size: 24 x 36  
 Stained Pine Siding  
 2 - 9 x 7 Insulated Carriage Doors  
 5 - 2 x 4 + 3 - 2 x 3 Aluminum Windows  
 1 - 9 Light Steel Door  
 40 Year Metal Roofing + Cupola  
 10' Walls + 8' Lean-to  
 Half Loft & Steps with Landing  
 Awning

Estimated Price **\$88,400**  
 + Foundation & Concrete \$13,000 - \$18,000

## HOW IT'S MADE



### INFORMATION

\*free delivery for 30 miles, delivery charges may apply beyond 30

The Willow Creek is real property No additional sales tax charged

Floor is not included

#### BUILDING HEIGHTS

20' Wide = 18' 2" High  
24' Wide = 19' 8" High  
30' Wide = 21' 11" High



BASE PRICE MODEL

## SIDING CHOICES View Pricing Guide For Current Pricing

### SMARTSIDE LAP SIDING

- 50 YEAR LIMITED WARRANTY
- Natural Wood Grain Texture
- 100% Clear
- Pre-Primed
- 50 Year Limited Warranty



### VINYL SIDING

- Maintenance Free
- .044 Thickness
- Match Your Home
- CDX Plywood Subsidizing



### PINE SIDING

#### WEAVER SIGNATURE CHOICE

- 1 x 8 Premium Grade Pine Siding
- Exclusive Rough Sawn Finish
- Aesthetically Pleasing
- Tongue & Groove



### DURATEMP SIDING

- 50 YEAR LIMITED WARRANTY
- Natural Wood Grain Texture
- 100% Clear
- Pre-Primed
- 50 Year Limited Warranty



### SMARTSIDE SIDING

- 50 YEAR LIMITED WARRANTY
- Natural Wood Grain Texture
- 100% Clear
- Pre-Primed
- 50 Year Limited Warranty





# Dutch

Great as a workshop or storage structure for larger items due to its high sidewalls, our versatile DUTCH with a steel entry door offers a safe, comfortable environment. It features an eye-catching gambrel style roof, with lofts and lean-tos available to add style and functionality. Quality features and plenty of options ensure an attractive, dependable barn you can rely on for years.



## OPTIONS

ON THIS 20x28

- Custom Cupola
- 10' x 7' Double Sliding Door w/ Transoms
- Loft door w/ Transom
- Painted Steel Entry Door
- 2' x 3' Windows
- 6' Lean to
- Mountain Red / White
- Onyx Black Dimensional Shingles

## GARAGE ESTIMATE MATRIX



### Two Car Basic

Size: 20 x 24  
 Painted Smartside Siding  
 1 - 16 x 7 Insulated Garage Doors  
 1 - 9 Light Steel Door  
 Painted Door  
 30 Year Shingle Roof  
 9' Walls  
 Half Loft With Steps & Landing

Estimated Price **\$36,600**  
 + Foundation & Concrete \$8,000 - \$12,000



### Two Car Deluxe

Size: 24 x 32  
 Painted Smartside Siding  
 2 - 9 x 7 Insulated Carriage Doors  
 3 - 3 x 4 Vinyl Window  
 1 - 9 Light Steel Door  
 30 Year Shingle Roof  
 9' Walls  
 Half Loft & Steps with Landing  
 8' Lean-to

Estimated Price **\$61,900**  
 + Foundation & Concrete \$11,000 - \$15,000

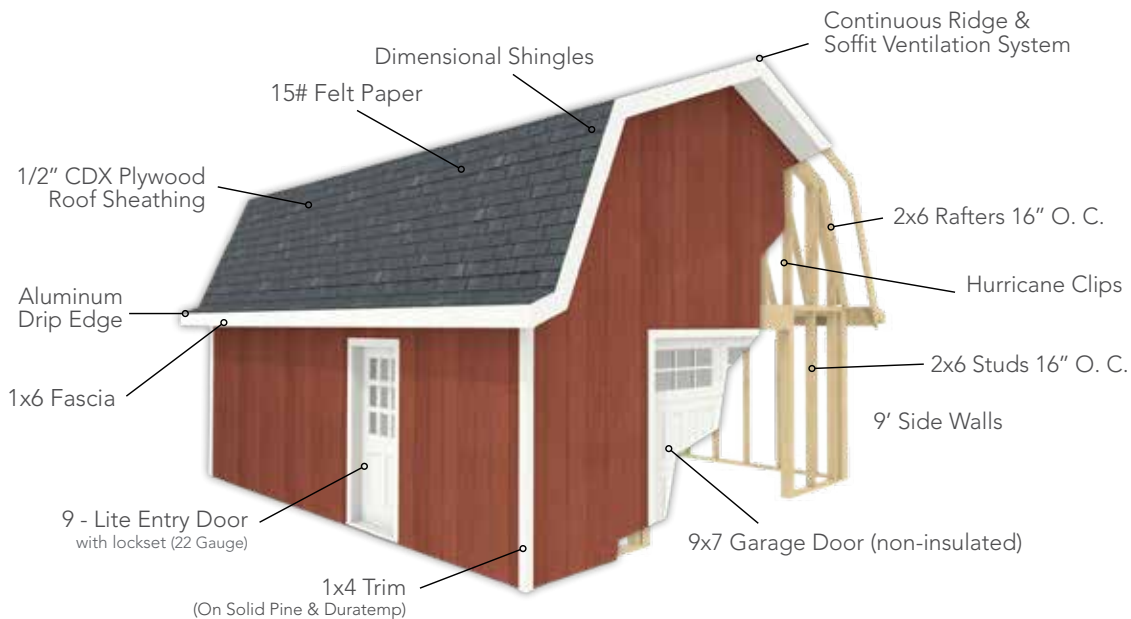


### Three Car Deluxe

Size: 24 x 36  
 Painted Duratemp Siding  
 2 - 9 x 7 Insulated Carriage Doors  
 8 - 3 x 4 Vinyl Window  
 1 - 9 Light Steel Door + Loft Door  
 40 Year Metal Roof + Cupola  
 9' Walls  
 Half Loft & Steps with Landing  
 8' Lean-to

Estimated Price **\$77,000**  
 + Foundation & Concrete \$13,000 - \$18,000

## HOW IT'S MADE



### INFORMATION

\*free delivery for 30 miles, delivery charges may apply beyond 30

The Dutch is real property No additional sales tax charged

Floor is not included

#### BUILDING HEIGHTS

20' Wide = 17' 8" High  
24' Wide = 19' 8" High



BASE PRICE MODEL

## SIDING CHOICES View Pricing Guide For Current Pricing

### SMARTSIDE LAP SIDING

#### 50 YEAR LIMITED WARRANTY

- Natural Wood Grain Texture
- 100% Clear
- Pre-Primed
- 50 Year Limited Warranty



### VINYL SIDING

- Maintenance Free
- .044 Thickness
- Match Your Home
- CDX Plywood Subsidizing



### PINE SIDING

#### WEAVER SIGNATURE CHOICE

- 1 x 8 Premium Grade Pine Siding
- Exclusive Rough Sawn Finish
- Aesthetically Pleasing
- Tongue & Groove



### DURATEMP SIDING

#### 50 YEAR LIMITED WARRANTY

- Natural Wood Grain Texture
- 100% Clear
- Pre-Primed
- 50 Year Limited Warranty



### SMARTSIDE SIDING

#### 50 YEAR LIMITED WARRANTY

- Natural Wood Grain Texture
- 100% Clear
- Pre-Primed
- 50 Year Limited Warranty





# Heritage

Clean classic lines with bold timber accents, the HERITAGE GARAGE is a perfect example of classic American heritage construction. With a attic truss and full loft the Heritage garage has plenty of space for all the extra stuff. High ten foot walls give plenty of space in the main area for all the things that you want to store.

## OPTIONS ON THIS 24x36

- Custom Cupola
- 9 x 9 Carriage House OHD
- 10' Walls
- Custom Window Package
- Painted Steel Entry Door
- Metal Roof Charcoal
- Full Length Awning
- Jamestown Red / Clay
- Windows In Garage Door

## GARAGE ESTIMATE MATRIX



### Two Car Basic

Size: 24 x 24  
Painted Smartside Siding  
2 - 9 x 8 Insulated Garage Doors  
1 - 9 Light Steel Door  
Dimensional Shingle Roof  
9' Walls  
Full Attic with Attic Pull Down Steps

Estimated Price **\$37,700**  
+ Foundation & Concrete \$9,000 - \$13,000



### Two Car Deluxe

Size: 24 x 28  
Painted Smartside Siding  
2 - 9 x 8 Insulated Carriage Doors  
3 - 2 x 4 with Transom Above  
3 - 2 x 3 Aluminum Windows  
1 - 9 Light Steel Door  
Metal Roof  
9' Walls  
Full Attic With Steps And Landing  
Stone Accents & Open Rafter Awnings

Estimated Price **\$52,600**  
+ Foundation & Concrete \$11,000 - \$15,000

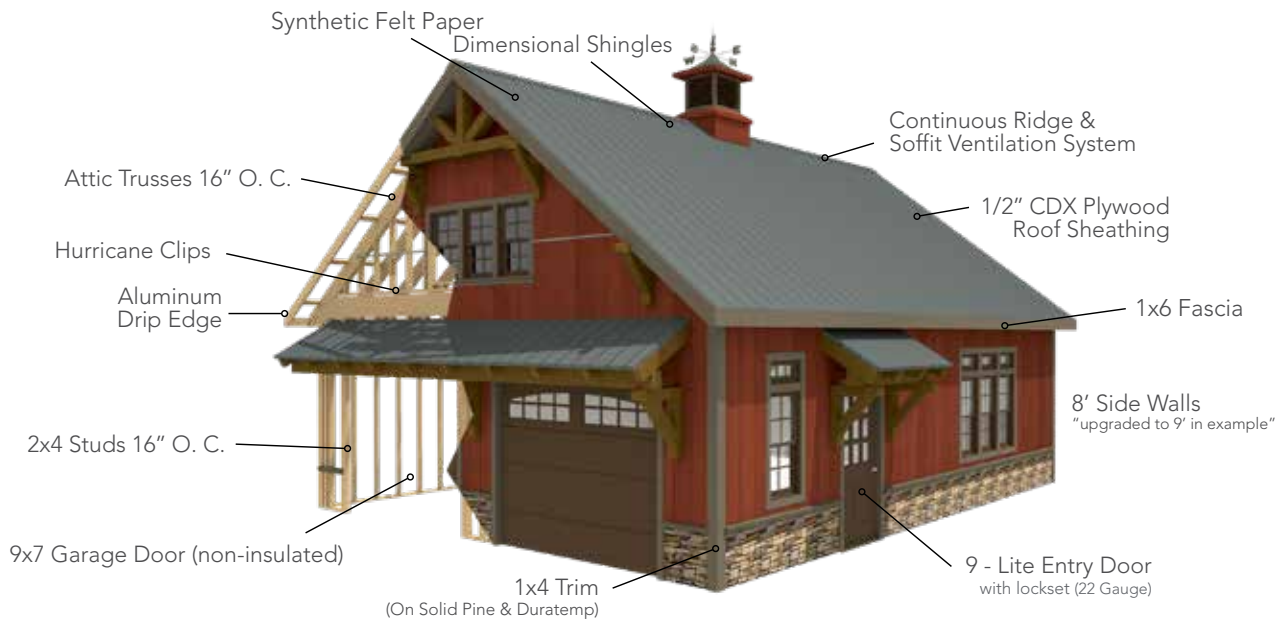


### Three Car Deluxe

Size: 24 x 36  
Painted Duratemp Siding  
2 - 9 x 8 Insulated Carriage Doors  
4 - 2 x 4 with Transom Above  
3 - 2 x 3 Aluminum Windows  
1 - 9 Light Steel Door  
Metal Roof - with Cupola & Weathervane  
9' Walls  
Full Attic With Steps And Landing  
Stone Accents & Open Rafter Awnings

Estimated Price **\$63,900**  
+ Foundation & Concrete \$12,000 - \$17,000

## HOW IT'S MADE



## INFORMATION

\*free delivery for 30 miles, delivery charges may apply beyond 30

The Heritage is real property No additional sales tax charged

Floor is not included

### BUILDING HEIGHTS

20' Wide = 16' 2" High  
24' Wide = 17' 8" High  
30' Wide = 19' 11" High



BASE PRICE MODEL

## SIDING CHOICES View Pricing Guide For Current Pricing

### SMARTSIDE LAP SIDING

50 YEAR LIMITED WARRANTY

- Natural Wood Grain Texture
- 100% Clear
- Pre-Primed
- 50 Year Limited Warranty



### VINYL SIDING

- Maintenance Free
- .044 Thickness
- Match Your Home
- CDX Plywood Subsidizing



### PINE SIDING

WEAVER SIGNATURE CHOICE

- 1 x 8 Premium Grade Pine Siding
- Exclusive Rough Sawn Finish
- Aesthetically Pleasing
- Tongue & Groove



### DURATEMP SIDING

50 YEAR LIMITED WARRANTY

- Natural Wood Grain Texture
- 100% Clear
- Pre-Primed
- 50 Year Limited Warranty



### SMARTSIDE SIDING

50 YEAR LIMITED WARRANTY

- Natural Wood Grain Texture
- 100% Clear
- Pre-Primed
- 50 Year Limited Warranty





# SHED TO CABIN

Did you know that you can turn any of our sheds into a perfect little cabin?

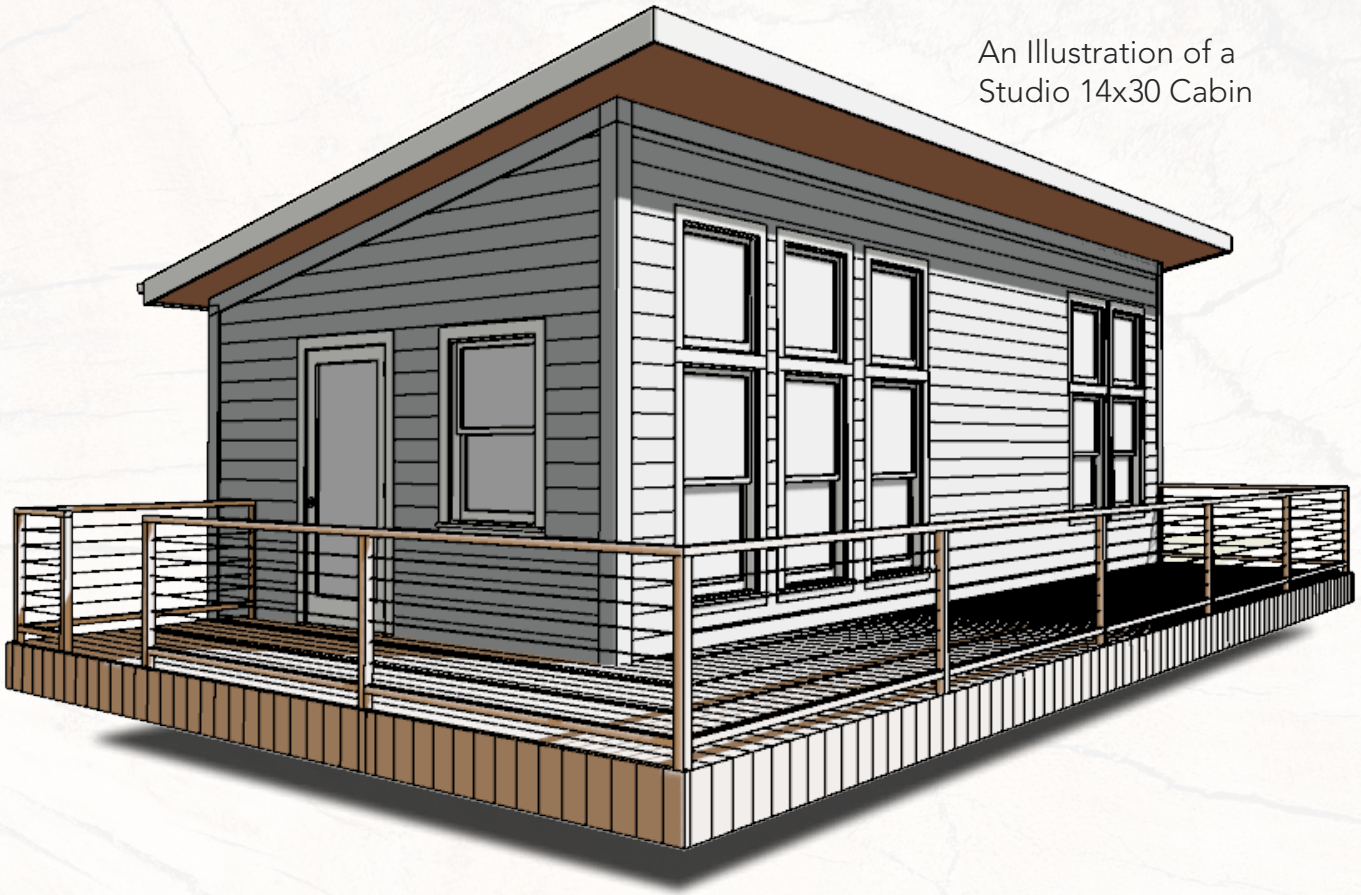


Pictured here is a 12x24 Gable shed. The Gable is our most popular shed, but you can easily convert the Gable shed into a Cabin. If you have a few acres and want an affordable space to rest in, this may be a good fit. Adding insulated windows and doors helps to better deal with temperature fluctuations. Many customers also insulate and finish the interior of the shed by themselves, using wood or metal products.



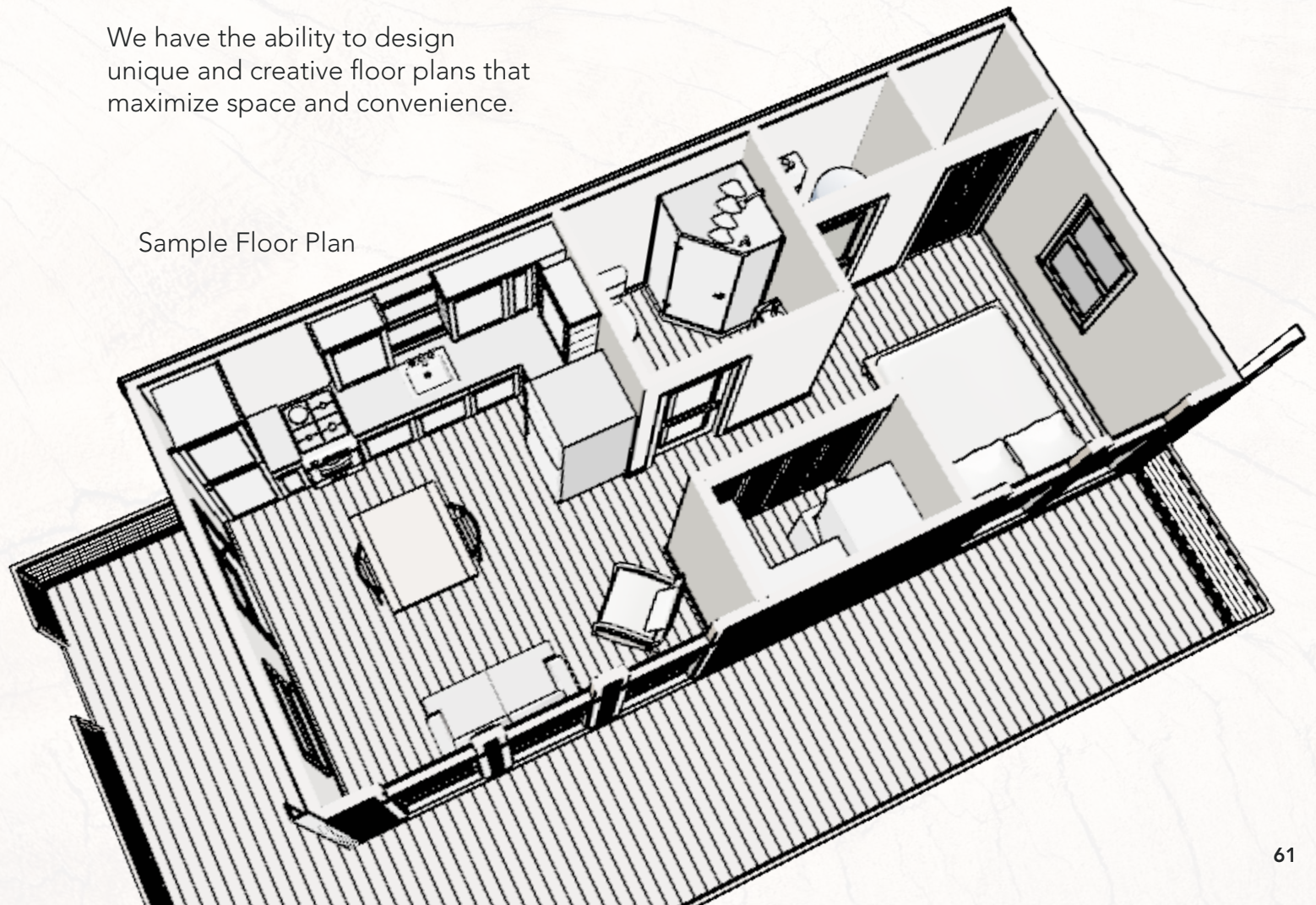


An Illustration of a  
Studio 14x30 Cabin



We have the ability to design  
unique and creative floor plans that  
maximize space and convenience.

Sample Floor Plan





# Cumberland CABIN

Classic cabin design and a very functional gambrel roof style make the CUMBERLAND a wonderful structure. With a front porch and half loft included you get the perfect Cabin for a break from your wonderful outdoor adventures.



## OPTIONS

ON THIS 16x24

- Shutters
- 1x4 Railing
- 2' x 2' Windows
- Painted Steel Entry Door
- 2' x 3' Windows
- 6' Porch
- Caramel / White
- Brownwood Dimensional Shingles

## CUMBERLAND ESTIMATE MATRIX



### Small Cabin

Size: 14 x 24  
 Stained Smartside  
 2 - 2 x 2 Vinyl Windows  
 6 - 2 x 3 Vinyl Windows  
 1 - 9 Light Steel Door  
 30 Year Shingle  
 8' Walls  
 Half Loft & Steps with Landing  
 6' Porch

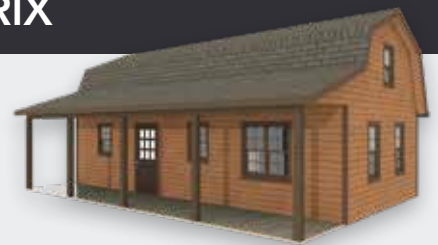
Estimated Price **\$32,500**  
 + Post Foundation \$3,500



### Medium Cabin

Size: 16 x 24  
 Stained Solid Pine  
 2 - 2 x 2 Vinyl Windows  
 9 - 2 x 3 Vinyl Windows  
 1 - 9 Light Steel Door  
 30 Year Shingle  
 8' Walls  
 Half Loft & Steps with Landing  
 6' Porch

Estimated Price **\$46,600**  
 + Post Foundation \$3,700

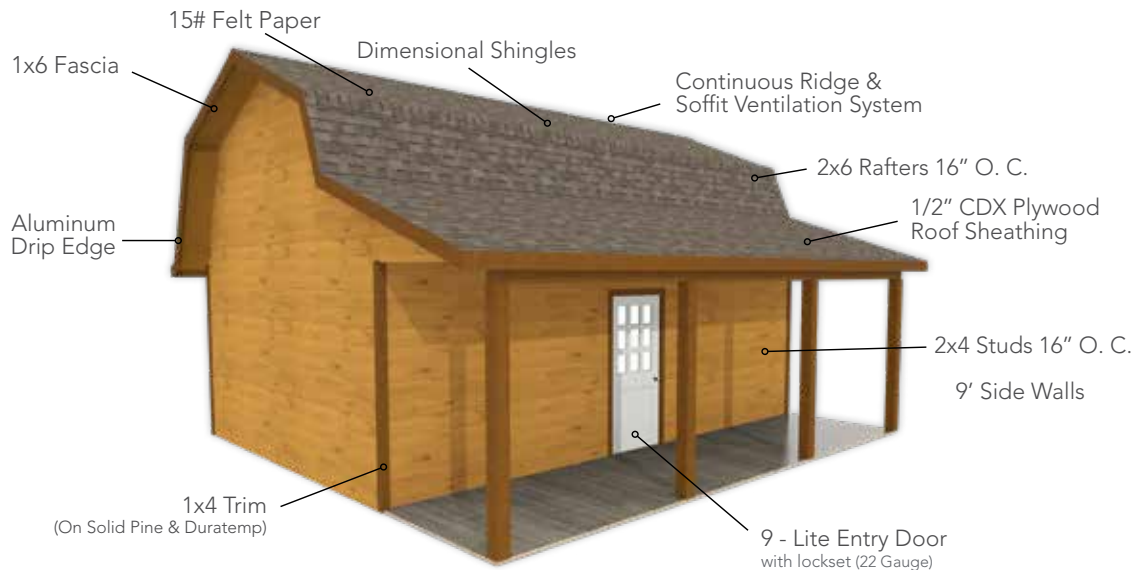


### Large Cabin

Size: 16 x 32  
 Stained Solid Pine  
 4 - 2 x 3 Vinyl Windows  
 6 - 2 x 4 Vinyl Windows  
 1 - 9 Light Steel Door  
 30 Year Shingle  
 8' Walls  
 Half Loft & Steps with Landing  
 6' Porch

Estimated Price **\$48,300**  
 + Post Foundation \$4,700

## HOW IT'S MADE



### INFORMATION

\*free delivery for 30 miles, delivery charges may apply beyond 30

The Cumberland is real property  
No additional sales tax charged

Floor is included

#### BUILDING HEIGHTS

12' Wide = 14' 6" High  
14' Wide = 15' 3" High  
16' Wide = 16' 0" High



### INCLUDED OPTIONS

- 6 - 2 x 3 Vinyl Windows
- 1 - 36" 9 Light Steel Entry Door
- 1 - Half Loft
- 1 - Stairs With Landing
- 1 - 2 x 10 Joist With 3/4" CDX Plywood Subfloor



BASE PRICE MODEL

## SIDING CHOICES View Pricing Guide For Current Pricing

### SMARTSIDE LAP SIDING

#### 50 YEAR LIMITED WARRANTY

- Natural Wood Grain Texture
- 100% Clear
- Pre-Primed
- 50 Year Limited Warranty



### VINYL SIDING

- Maintenance Free
- .044 Thickness
- Match Your Home
- CDX Plywood Subflooring



### PINE SIDING

#### WEAVER SIGNATURE CHOICE

- 1 x 8 Premium Grade Pine Siding
- Exclusive Rough Sawn Finish
- Aesthetically Pleasing
- Tongue & Groove



### DURATEMP SIDING

#### 50 YEAR LIMITED WARRANTY

- Natural Wood Grain Texture
- 100% Clear
- Pre-Primed
- 50 Year Limited Warranty



### SMARTSIDE SIDING

#### 50 YEAR LIMITED WARRANTY

- Natural Wood Grain Texture
- 100% Clear
- Pre-Primed
- 50 Year Limited Warranty





# Frontier CABIN

Who doesn't want to spend some time away from the hustle and bustle of life? With classic "A" frame design the FRONTIER makes your escape so much sweeter. With a roomy loft and a porch perfect for conversations, you will enjoy your time away.

## OPTIONS

ON THIS 16x24

- Galvalume Metal Roof
- 6' Porch
- 10' Sidewalls
- 9 Light Steel Door
- Painted Steel Door - Rustic Red
- 2'x3' Vinyl Window Clay
- 2'x4' Vinyl Window Clay
- Y Porch Bracing
- 6' Shed Dormers
- Smoke/Mountain Red

## FRONTIER ESTIMATE MATRIX



### Small Cabin

Size: 14 x 24  
 Stained Smartside  
 2 - 2 x 2 Vinyl Windows  
 8 - 2 x 3 Vinyl WIndows  
 1 - 9 Light Steel Door  
 30 Year Shingle  
 9' Walls  
 Half Loft & Steps with Landing  
 6' Porch  
 4 - Shutter Sets

Estimated Price **\$37,700**  
 + Post Foundation \$3,500



### Medium Cabin

Size: 16 x 24  
 Stained Solid Pine  
 2 - 2 x 2 Vinyl Windows  
 7 - 2 x 3 Vinyl WIndows  
 1 - 9 Light Steel Door  
 Metal Roof  
 9' Walls  
 Half Loft & Steps with Landing  
 6' Porch  
 5 - Shutter Sets

Estimated Price **\$45,200**  
 + Post Foundation \$3,700



### Large Cabin

Size: 16 x 32  
 Stained Solid Pine  
 3 - 2 x 3 Vinyl Windows  
 9 - 2 x 4 Vinyl WIndows  
 1 - 9 Light Steel Door  
 Metal Roof  
 9' Walls  
 Half Loft & Steps with Landing  
 6' Porch

Estimated Price **\$54,500**  
 + Post Foundation \$4,700

## HOW IT'S MADE



### INFORMATION

\*free delivery for 30 miles, delivery charges may apply beyond 30

The Frontier is real property No additional sales tax charged

Floor is included

#### BUILDING HEIGHTS

12' Wide = 16' 1" High  
14' Wide = 17' 0" High  
16' Wide = 18' 1" High



### INCLUDED OPTIONS

- 6 - 2 x 3 Vinyl Windows
- 1 - 36" 9 Light Steel Entry Door
- 1 - Half Loft
- 1 - Stairs With Landing
- 1 - 2 x 10 Joist With 3/4" CDX Plywood Subfloor



BASE PRICE MODEL

## SIDING CHOICES View Pricing Guide For Current Pricing

### SMARTSIDE LAP SIDING

#### 50 YEAR LIMITED WARRANTY

- Natural Wood Grain Texture
- 100% Clear
- Pre-Primed
- 50 Year Limited Warranty



### VINYL SIDING

- Maintenance Free
- .044 Thickness
- Match Your Home
- CDX Plywood Subsidizing



### PINE SIDING

#### WEAVER SIGNATURE CHOICE

- 1 x 8 Premium Grade Pine Siding
- Exclusive Rough Sawn Finish
- Aesthetically Pleasing
- Tongue & Groove



### DURATEMP SIDING

#### 50 YEAR LIMITED WARRANTY

- Natural Wood Grain Texture
- 100% Clear
- Pre-Primed
- 50 Year Limited Warranty



### SMARTSIDE SIDING

#### 50 YEAR LIMITED WARRANTY

- Natural Wood Grain Texture
- 100% Clear
- Pre-Primed
- 50 Year Limited Warranty



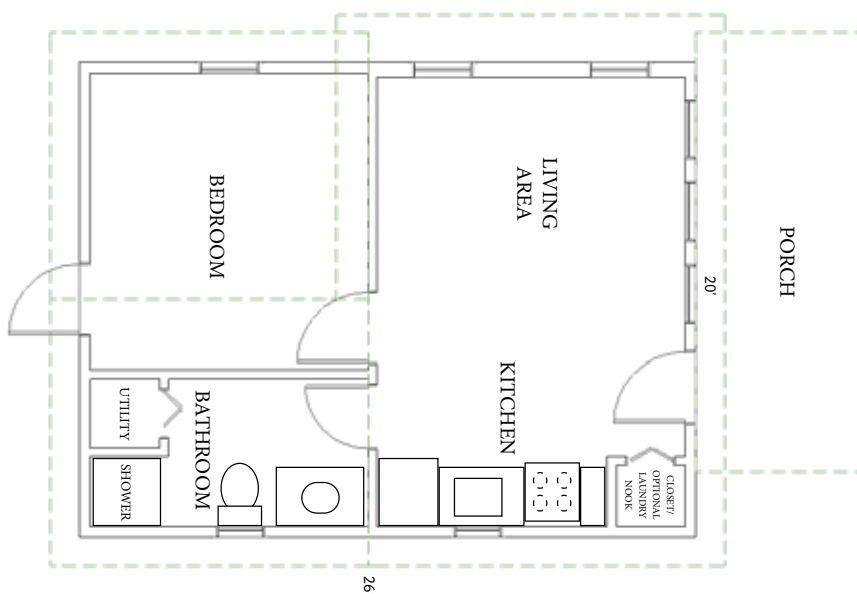


# Aspen CABIN

Imagine yourself looking out across a beautiful lake setting or a majestic mountain vista. We all love these moments and what a better way to enjoy them then with an ASPEN CABIN. With its one level floor plan, and open spaces it feels open and airy. Big windows allows lots of natural light and views of the surrounding landscape.



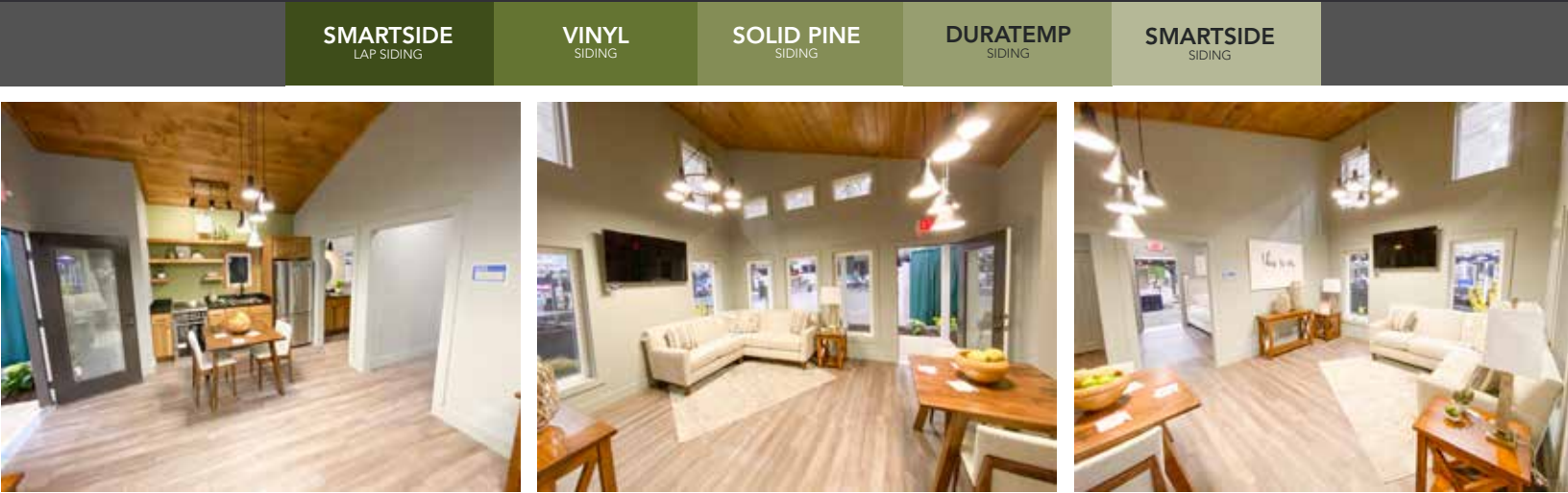
Floorplan



HOW IT'S MADE



SIDING CHOICES View Pricing Guide For Current Pricing







## Custom Homes & SPECIAL PROJECTS

At Weaver Barns we pride ourselves in our ability to build many different types of projects. Our clients come to us with a wide variety of unique requests and with our highly skilled team of craftsman we turn these dreams into reality. Talk to us about your custom Dream project.



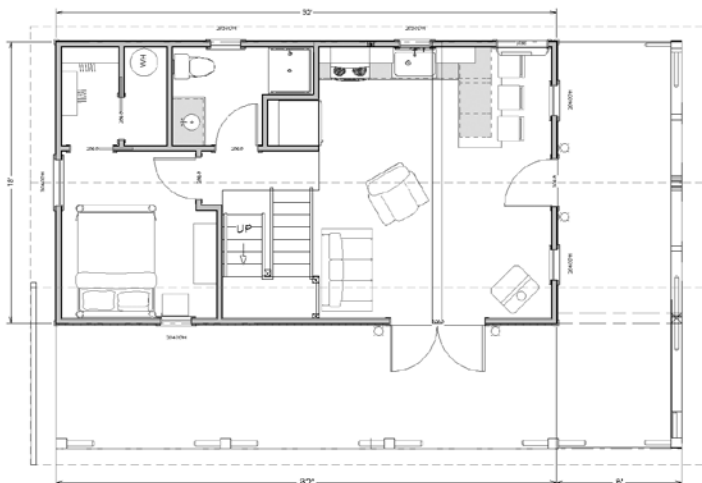


# Rocky Ridge | Homes

Size 18 x 32 864 Sq. Ft.



MAIN FLOOR



SECOND FLOOR





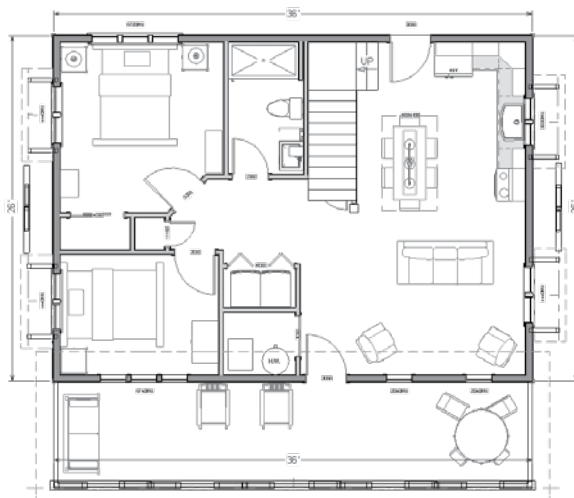
# Cedar Brooke

Homes

Size 26 x 36 1404 Sq. Ft.



MAIN FLOOR



SECOND FLOOR

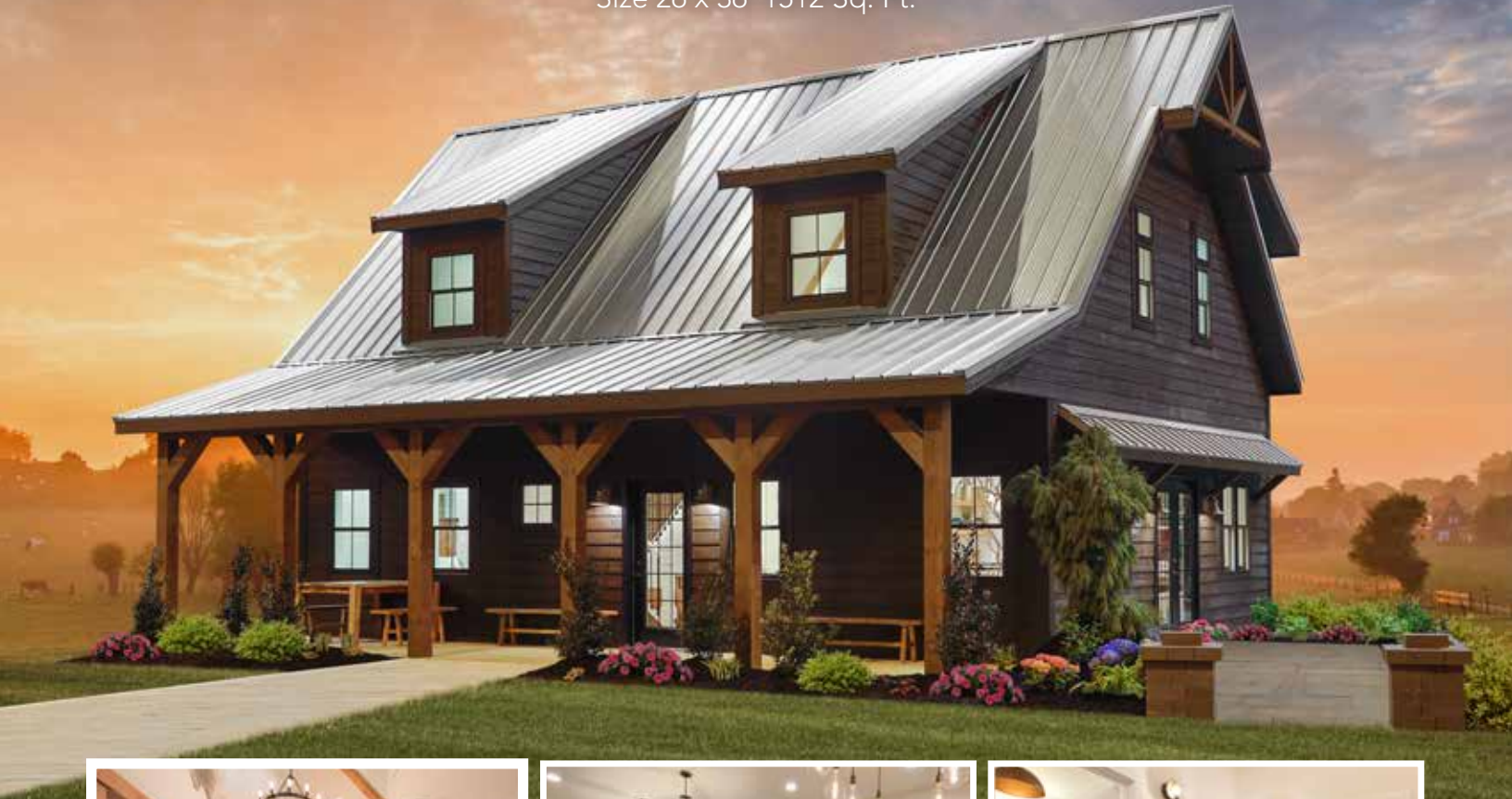




# Cedar Brooke

Homes

Size 26 x 36 1512 Sq. Ft.



MAIN FLOOR



SECOND FLOOR





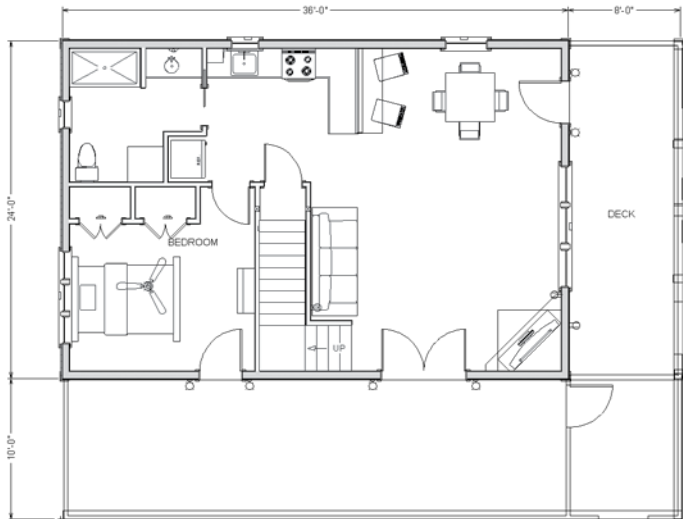
# Timber Lodge

Homes

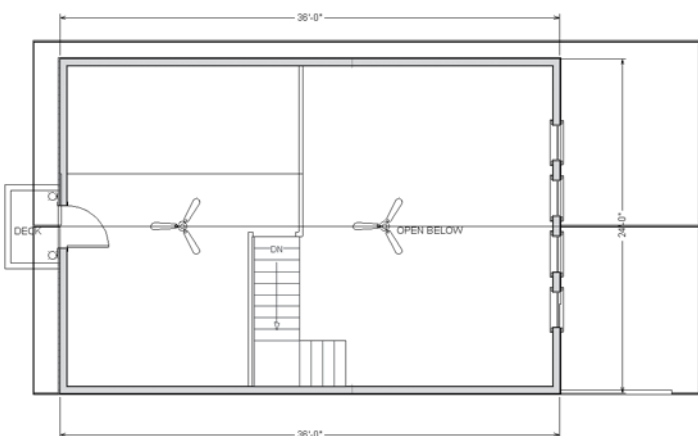
Size 24 x 36 1296 Sq. Ft.



MAIN FLOOR

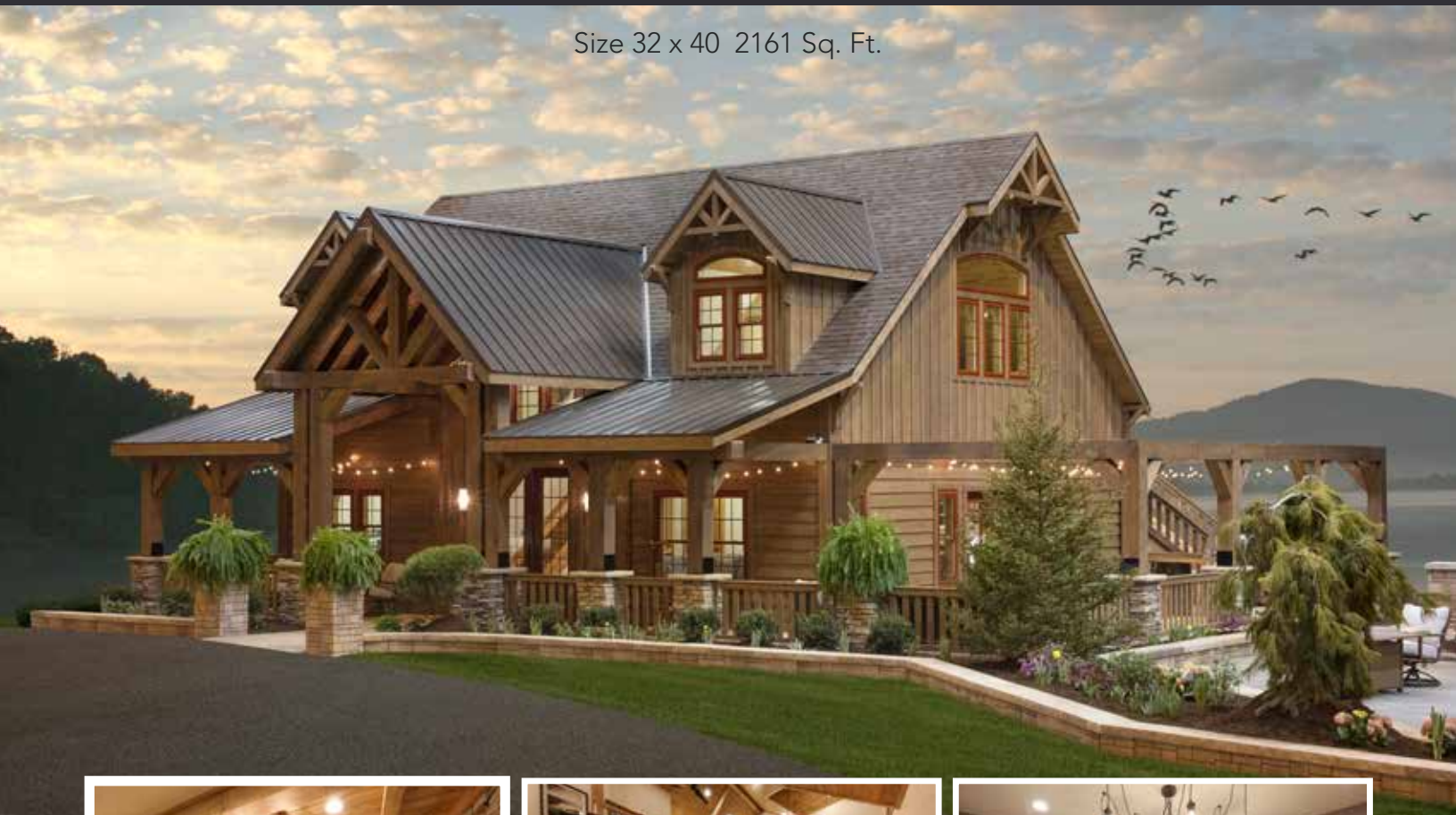


SECOND FLOOR

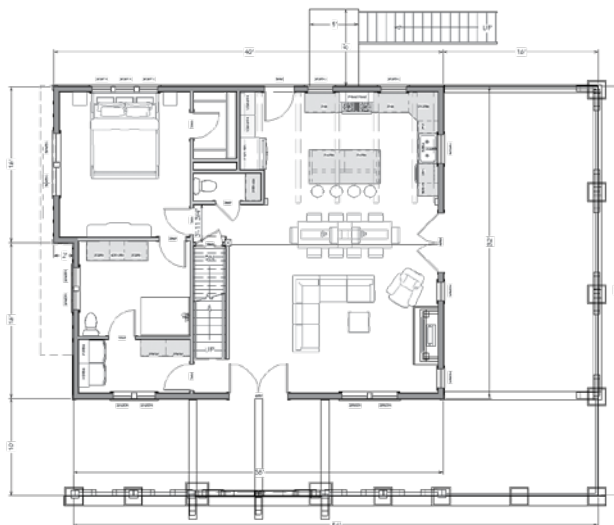


# Grand Lake | Homes

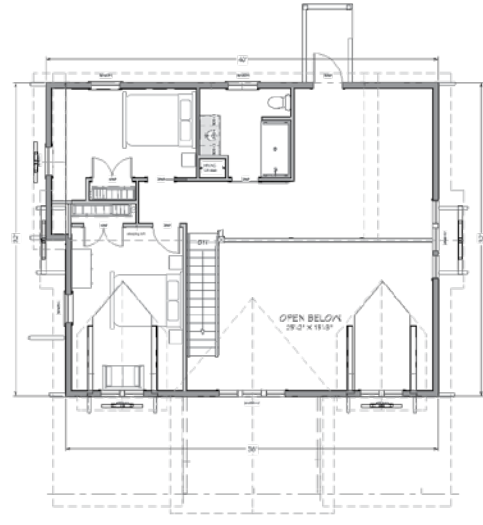
Size 32 x 40 2161 Sq. Ft.



MAIN FLOOR



SECOND FLOOR











Pictured is the GRAND LAKE great room Interior. This model was designed with a rustic fit and finish. With high open ceilings and an open floor plan, it is the perfect home for a rustic setting.



# DOORS

*NOTE: Due to the effect of light, age and printing process, all color samples on these pages may vary in color or sheen from the actual materials.*

## WOOD DOUBLE DOORS



#100  
SIZES - 4' 5'  
6' 7'



#102-TW  
SIZES - 4' 5'  
6' 7'



#101-SW  
SIZES - 5' 6'



#103-AW  
SIZES - 5' 6'



#200  
SIZES - 4' 5'  
6' 7'



#202-TW  
SIZES - 4' 5'  
6' 7'



#203-LW  
SIZES - 5' 6'



#204-FW  
SIZES - 5' 6'

## WOOD SINGLE DOORS



#100-SD  
SIZES - 30" 36"



#102-SD  
SIZES - 30" 36"



#101-SD  
SIZES - 30" 36"



#103-SD  
SIZES - 36"



#200-SD  
SIZES - 30" 36"



#202-SD  
SIZES - 30" 36"



#203-SD  
SIZES - 30" 36"



#204-SD  
SIZES - 36"

## WOOD TRIPLE DOORS



SIZES 7'6" - 9'

## WOOD SLIDING DOORS



10'x7'



10'x7' with Transoms

## VINYL DOORS



**#200V**  
SIZES - 4' 5' 6' 7'



**#202-TWV**  
SIZES - 4' 5' 6' 7'

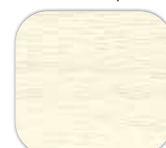


**#200-SDV**  
SIZES - 30" 36"



**#202-SDV**  
SIZES - 30" 36"

### Optional Colors



Birchwood



Sand



Pewter



Clay

## STEEL ENTRY DOORS

Dead Bolt +\$ Painted Steel Door + \$ Stock Grid Colors White - Black - Clay - Bronze Special Grid Colors +\$



**36" 6-Panel**  
ECO (no-paint)  
24 Gauge  
22 Gauge



**36" 9-Lite**  
ECO (no-paint)  
24 Gauge  
22 Gauge



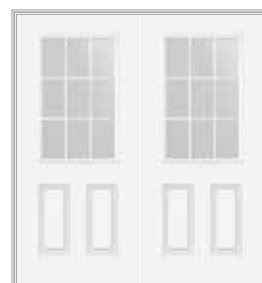
**36" 15-Lite**  
22 Gauge



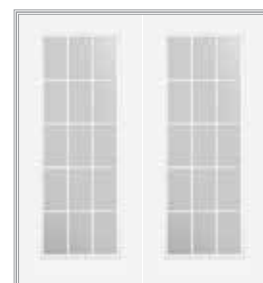
**36" 3-Lite**  
22 Gauge



**72" 6-Panel**  
22 Gauge



**72" 9-Lite**  
22 Gauge



**72" 15-Lite**  
22 Gauge

### Steel Door Colors \*Paint Is An Additional Charge



Artic White



Sand



Almond



Terra Clay



Canyon



Sable



Bronze



Royal Brown



Cappuccino



Evergreen



Oakmoss



Deep Ruby



Rustic Red



Lite Gray



Proper Gray



Tuxedo Gray



Midnight Blue



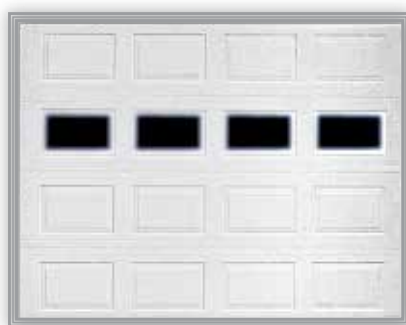
Sage

## OVERHEAD GARAGE DOORS

Garage Door Opener w/ One Remote +\$ Additional Remote +\$



**Standard Door**  
Available non-insulated or insulated



**Standard Door with Optional Windows**  
Available non-insulated or insulated



**Carriage House Door Insulated**

### Garage Door Colors



Sandstone



Almond



Polar White



Brown



Bronze\*



Charcoal\*



Carbon Black\*

\*Only available on **Standard Insulated** and **Carriage House Doors**



## DOOR RAMPS



### Door Ramps

3' depth X width of door  
4' depth X width of door  
5' depth X width of door  
Ramps in Excess of 5' (per sq. ft.)



Cedar Gable Vents



Peak Extension

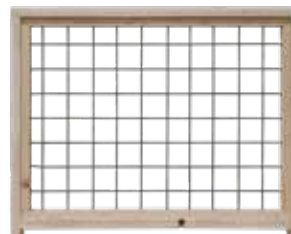
## RAILING



1 x 4 Pine & Cedar Railing  
\*Available In Vinyl



2 x 2 Pine & Treated Railing  
\*Available In Vinyl



Wire Panel Railing



Rebar Railing

## STAIRS & LADDERS



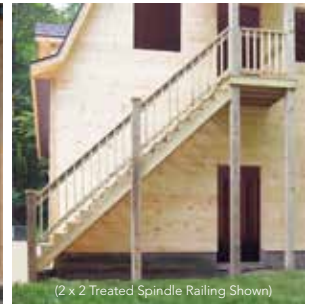
Attic Ladder



**Straight Steps**  
(1x4 Railing Upgrade Shown)  
Add Risers Plates



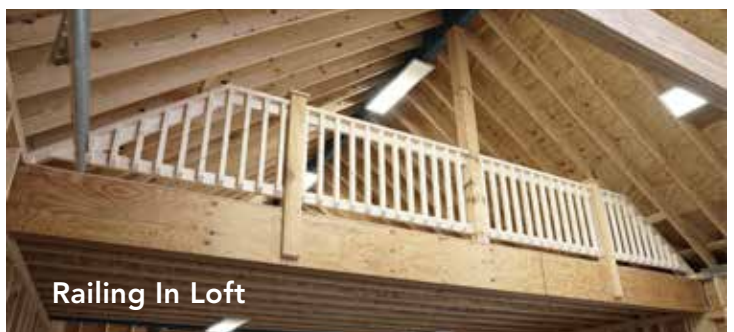
**Steps With  
Landing & Handrail**  
(Standard 2x2 Railing Shown)  
Add Risers Plates



**Exterior Treated Steps**  
3 treads  
Steps & Landing, Cedar Railing  
Additional Tread  
Exterior treated landing



**Sliding  
Stair Ladder**

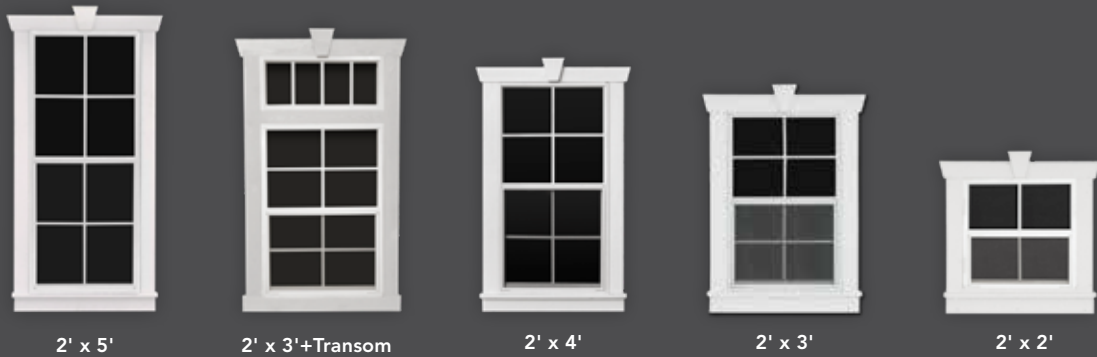


**Railing In Loft**

# WINDOWS

## ALUMINUM SINGLE HUNG WINDOWS

Includes Screens & Grids - Choose: White/Brown



## VINYL WINDOWS

Includes Screens & Grids - Color: White Upgrade: Almond Or Clay Mullied Window



## ACCENT WINDOWS & SKYLIGHTS



**Octagon**  
White/Brown



**Aluminum Transom**  
White/Brown



**Vinyl Transom**  
White

2'x4' SKYLIGHT  
Insulated

## WOOD PANEL STYLE SHUTTERS



**K Panel Shutter**



**Plain Panel Shutter**

## WOOD/VINYL SHUTTERS & FLOWER BOXES

### WOOD



**Wood Shutters & Flowerbox**



**Wood Shutters**



**Wood Shutters Z Strap**



**Wood Flowerbox**

### VINYL



**Vinyl Shutters & Flowerbox**



**Vinyl Shutters**



**Vinyl Flowerbox**



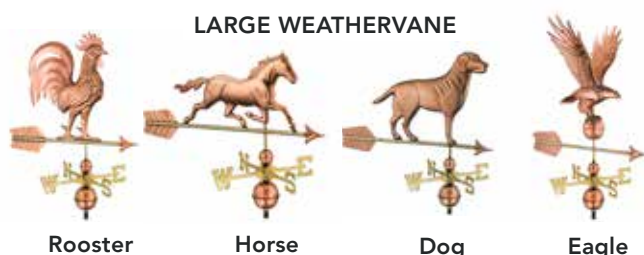
# CUPOLAS & WEATHERVANES



**Traditional Cupola**  
SOLID CEDAR + BRONZE METAL ROOF Standard



**Windowpane Cupola**  
SOLID CEDAR + BRONZE METAL ROOF Standard  
\*Frosted Plexi-Glass Standard, Clear Available



**LARGE WEATHERVANE**

Rooster

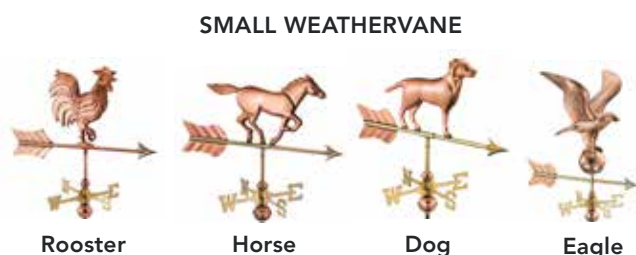
Horse

Dog

Eagle



**Curved Metal Roof Option**



**SMALL WEATHERVANE**

Rooster

Horse

Dog

Eagle

## CUPOLA OPTIONS

Colored Metal Roof  
110V Light inside Cupola  
Curved Metal Roof

# SHELVES & WORKBENCHES

## 1' DEPTH

8' x 1' (2 x 4 Joists)  
10' x 1' (2 x 4 Joists)  
12' x 1' (2 x 4 Joists with Center Post)  
14' x 1' (2 x 4 Joists with Center Post)  
16' x 1' (2 x 4 Joists with Center Post)

## 2' DEPTH

8' x 2' (2 x 4 Joists)  
10' x 2' (2 x 4 Joists)  
12' x 2' (2 x 4 Joists with Center Post)  
14' x 2' (2 x 4 Joists with Center Post)  
16' x 2' (2 x 4 Joists with Center Post)



## WORKBENCH (FREESTANDING)

8' x 2'  
10' x 2'  
12' x 2'

# STANDARD LOFTS & CUSTOM LOFTS

## STANDARD SIZES

8' x 4' (2 x 4 Joists 16" O.C.)  
10' x 4' (2 x 4 Joists 16" O.C.)  
12' x 4' (2 x 6 Joists 16" O.C.)  
14' x 4' (2 x 8 Joists 16" O.C.)  
16' x 4' (2 x 8 Joists 16" O.C.)

## CUSTOM SIZES

2 x 8 with 5/8" plywood (per sq. ft.)  
2 x 10 with 3/4" plywood (per sq. ft.)  
I-joists with 3/4" plywood (per sq. ft.)



\*Min. 7/12 Pitch Required

# AWNINGS & ARBORS



## Shed Awnings

Door Awning for Man Door (56")  
(open ceiling)  
Door Awning for Garage Door (22')  
(flat ceiling)



## Door Arbors

Door Arbor for 4' Door  
Door Arbor for 5' Door  
Door Arbor for 6' Door



Open Rafter Awning



Closed Rafter Awning

## ROOF PITCH

Sheds Steeper Roof Pitch (up to 8/12 Pitch)  
(per sq. ft. X 1 pitch increase)

Sheds Steeper Roof Pitch (9/12 to 12/12 Pitch)  
(per sq. ft. X 1 pitch increase)

Large Structures Steeper Roof Pitch (up to 7/12 Pitch)  
(per sq. ft. X 1 pitch increase)

*\*Ask Your Sales Representative for 8/12 & Higher Pitch Prices*



## SIDEWALLS

### SHEDS & BARNs

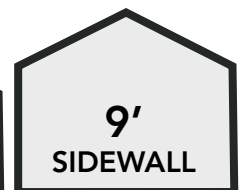
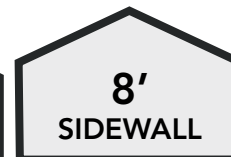
1' increments per perimeter foot  
Duratemp Buildings  
Pine Buildings  
Vinyl Buildings

### PAVILIONS

Per Post Per Foot Up To 10'

### CABINS, GARAGES & HOMES

1' increments per perimeter foot  
Duratemp Buildings  
Pine Buildings  
Vinyl Buildings



## TRIM STYLES



Basic Cross Bracket



Timber Frame Bracket

## GABLE BRACKETS



# SHINGLES

15# Felt Paper (per sq. ft.) +\$

## STANDARD DIMENSIONAL



## OPTIONAL DURATION



# OPTIONAL METAL ROOF



*NOTE: Due to the effect of light, age and printing process, all color samples on these pages may vary in color or sheen from the actual materials.*

**METAL ROOF** (per sq. ft.)  
 Manchester & Craftsman (per sq. ft.)  
 Large Structures (per sq. ft.)  
 Dutch & Cumberland (per sq. ft.)  
 Legacy Panel Upgrade (per sq. ft.)

# VINYL SIDING COLORS

## STANDARD COLORS



## PREMIUM COLORS



➤ *Ask about our additional colors available for vinyl*

# PAINT COLORS

					
Navajo White	Bear Beige	Buckskin	Clay	Dark Brown	Espresso
					
Zook Tan	Congress Tan	Quakertown Red	Mountain Red	Jamestown Red	Barn White
					
Black	Jasper Gray	Steel Gray	Charcoal	Dark Gray	Wild Grasses
					
Avocado	Shale	Forest Green	Timber	Bronze	Navy Blue
					
Heritage Blue	Bora Bora				

➤ *Ask about our additional colors available for Paint*

# STAIN COLORS

PINE SIDING stain colors

			
Bark	Natural	Caramel	Pecan
			
Smoke	Driftwood	Pioneer Brown	
			
Butternut	Chestnut Brown	Ebony	

ENGINEERED SIDING stain colors

			
Natural	Caramel	Pecan	Bark
			
Smoke	Driftwood	Pioneer Brown	
			
Butternut	Chestnut Brown	Ebony	





# Weaver Barns *ltd.*

"everyone needs a little structure in their life"

1696 St. Rt. 39 • Sugarcreek, Ohio 44681  
2 miles West of Sugarcreek on St. Rt. 39  
p: 330-852-2103 • Toll Free: 888-289-4940  
f: 330-852-7804 • [info@weaverbarns.com](mailto:info@weaverbarns.com)

2022 NO PRICING



Like Us  
on Facebook



Follow Us  
on Pinterest



Find Us  
on Houzz



Follow Us  
on Instagram

[www.weaverbarns.com](http://www.weaverbarns.com)